

ambushed... debris... services... lines at... housing... standards... violation of... according to... director of the... Cities program... housing... notes, vif-... public housing... Mayor Edward R. K... speaking for the... administration, says: tried 100 times to... the city what... you can't get... maintain the field... necessary to meet the... to present to the... Board of... the Governor, the... the Congress... the responsible... the consequenc-... couldn't... station, for ex-... been reduced from... decline that cor-... to the in-... reported crime... respond to... they are... and... and... Fewer wel-... services, ... lines at... Fewer housing... the housing... 60,000 of the... are standards... and in violation of... according to... dire... el...

ROARING ELEPHANTS



being invaded by drug addicts, and shortly after that they were burned out. The plumbing and electrical fixtures were stolen, presumably by the junkies, who could sell the materials; windows were smashed, doors were removed, floorboards were taken. It was almost as if a hard-won clearing in the jungle had been inexorably reclaimed by the undergrowth.

Damage Totaled \$2-Million

For the citizens of the city, the loss came to more than \$2-million. But was this episode symbolic of all efforts to reclaim the South Bronx?

"You can't do things piecemeal—we need better education, better health, housing maintenance, support services," said Robert Abrams, the Bronx Borough President, who on a recent tour was standing in front of the Fox Street houses when a resident purposefully walked over to his limousine, casually unzipped his trousers, and the work was completed within a year, and families immediately moved into the buildings, paying a total of \$300,000 for the work.

Within the building, however, being invaded and shortly after that they were burned out. The plumbing and electrical fixtures were presumably by the junkies, who could sell the materials; windows were smashed, doors removed, floorboards removed, floorboards removed.

Nathan Leventhal, the Housing Rent and Home Commission Commissioner, said problems is the centive for landlords for later housing court buildings.

"We've asked for more funding," Mr. Leventhal said. "We need more resources. We've had serious attrition in the Office of Code Enforcement."

The city has 300 teams of buildings inspectors with three or four men to each team. Mr. Leventhal says 10 per cent of the city's housing inspection force has been concentrated in the South Bronx. In the first 11 months of last year they ordered 5,536 emergency repairs in the and Development Administration, put it this way:

"We'll get a call that there's no heat. An inspector goes out. The landlord puts up the heat. Then a few days later, the heat goes off. The tenants call again.

Mr. Gill is critical, however, of the banking community, which he says has not played the kind of role it should have played in the South Bronx.

In addition, some merchants have benefited from the recession of the South Bronx. According to Michael regional vice president Bankers Trust Company, there are greater than 10 years ago along "the Hub"—the shopping center that radiates from Avenue and 149th Street because of the density of the community.

Banks Are Criticized

Mr. Gill is critical, however, of the banking community, which he says has not played the kind of role it should have played in the South Bronx.

In recent years, a large amount of Federal funds have been given in an effort to improve the South Bronx. Some of the money has been used in the demolition and construction of a new Point market.

Third Avenue "el" is scheduled for demolition, and work will under way on a new Point market.

In addition, some merchants have benefited from the recession of the South Bronx. According to Michael regional vice president Bankers Trust Company, there are greater than 10 years ago along "the Hub"—the shopping center that radiates from Avenue and 149th Street because of the density of the community.

THE LEGEND OF SALSA

Drawing Index

General

EX 0.00	
EX 0.01	Cover Page
EX 0.02	Drawing Index

Executive Summary

EX 1.00	
EX 1.01	Project Parameters
EX 1.02	Client
EX 1.03	Programming
EX 1.04	Site
EX 1.05	Wayfinding
EX 1.06	Simplified Plan
EX 1.07	Site Axon
EX 1.08	Introduction
EX 1.09	Timeline
EX 1.10	Graffiti
EX 1.11	Kaufman Exterior
EX 1.12	Kaufman Interior
EX 1.13	Phonebooth
EX 1.14	World Radio
EX 1.15	Album Artwork

EX 1.16	Participatory Wall
---------	--------------------

Schedules and Lists

EX 2.00	
EX 2.01	Symbols List
EX 2.02	Material Schedule
EX 2.03	Graphics Schedule
EX 2.04	Graphics Specification List

Plans, Elevations, & Sections

EX 3.00	
EX 3.01	Area Location Plan
EX 3.02	Simplified Plan
EX 3.03	Dimension Plan
EX 3.04	Material Plan
EX 3.05	Graphic Location Plan
EX 3.06	Overall Section 1
EX 3.07	Overall Section 2
EX 3.08	Overall Section 2
EX 3.09	Back Elevation
EX 3.10	Front Elevation

Graphics

EX 4.00

EX 4.01

Color Palette

EX 5.12

Timeline Storyboard

EX 4.02

Reference

EX 5.13

Graffiti Storyboard

EX 4.03

Graphic Look & Feel

EX 5.14

Kaufman Storyboard

EX 4.04

Visual ID System

EX 5.15

World Radio Storyboard

EX 4.05

Collateral

EX 4.06

Floor Graphics

Details

EX 5.00

EX 5.01

Front Intro Elevation

EX 5.02

Back Intro Elevation

EX 5.03

Flattened Intro Graphic

EX 5.04

Flattened Intro Graphic

EX 5.05

Directional Detail

EX 5.06

Flattened Content Graphic

EX 5.07

Kaufman Plan

EX 5.08

Kaufman Section

EX 5.09

Kaufman Exploded Axon

EX 5.10

Kaufman Axon

EX 5.11

Kaufman Detail

Executive Summary

Project Parameters

thesis statement

History can feel impersonal and unrelatable as it focuses on the logic of culture rather than the people within them.

Through immersive technologies, community memory can be collected and expressed within a new form of archiving.

This allows for an experience where visitors understand the nuances of memory.

big idea

Salsa is a joyful expression of culture born from oppressive times. This exhibition seeks to show that Salsa was a form of resistance. Salsa is two things at once: it is brutal, in your face, honest, street. But it is also fanfantasy, an escape.

Project Parameters cont'd

goals

Educational

- To establish that Latinos have a history of resistance.
- To establish that Salsa was a form of civil disobedience.
- Teach visitors what Salsa music sounds like, what it's made of.
- Show visitors what Salsa dance looks like.
- Introduce visitors to the important events at this time.
- Demonstrate what was happening in Latin countries to impact the Bronx.
- And determine what was happening in the Bronx to impact Latinos.

Project

- To reveal the forgotten history of the 70's Latino Bronx.
- To commemorate the history and experiences of community members.
- To allow community members to share their memories.
- To focus on Latino joy and pride.

Experience

- Visitors will dance to Salsa rhythms.
- They will hear stories about the South Bronx.
- Residents will express issues in their neighborhood.
- They can provide their own story.
- Visitors will see the history of Salsa within historical context.

interpretive approach

Rubén Blades' Plástico

This exhibition uses the song Plástico to tell the narrative of the Latino experience within the history of Salsa. It is important to use the music to tell the story of what was happening in the 70's. Without the music driving the experience, there is no authenticity. The exhibition is a linear telling of the history of Salsa using the lyrics to divide the information into sections.

client

LATINO PUBLIC BROADCASTING



Mission Statement: Latino Public Broadcasting is the leader of the development, production, acquisition and distribution of non-commercial educational and cultural media that is representative of Latino people, or addresses issues of particular interest to Latino Americans. These programs are produced for dissemination to the public broadcasting stations and other public telecommunication entities. LPB provides a voice to the diverse Latino community on public media throughout the United States.



Mission Statement: The BxArts Factory endeavors to become a preeminent Arts Institution in the Bronx, committed to supporting local artists and art projects focused on making art accessible to communities in the Bronx and using art to address social and economic inequities in the Bronx.

audience

Primary

2nd/3rd generation Latinos in the South Bronx

Secondary

Residents of the South Bronx

Tertiary

Residents of NYC outside of the Bronx



Mission Statement: Kaufman Music Center stimulates appreciation of and participation in music through music performance and education in ways that awaken creativity, advance innovation and create a sense of wonder among performers, students, teachers and the public at large.

Programming



BXArts Factory will be maintaining the space and facilitating the participatory aspects of the exhibition. The graffiti wall project and the visitor generated content wall would fall under that category. They will also service the centerpiece of the exhibition if need be.



The centerpiece will be permanently installed by the Kaufman Music Center. The floor graphics illustrate the 2-3 Son Clave rhythm in Salsa music. The instrument can stand outside of the context of the exhibition as it teaches about the amount of people needed to create music together. It is a piece that belongs to the community.

Site

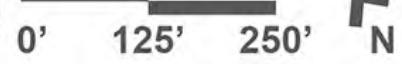


NYC

The I

Rec Center Employee Parking Lot

Beekman Avenue Entrance



Phase II Boundary
Existing Park



Proposed Trees



12'x12' Market Stall

Neighborhood

club tropicana



caravana club



casa amadeo



club tropicoro



st. mary's park

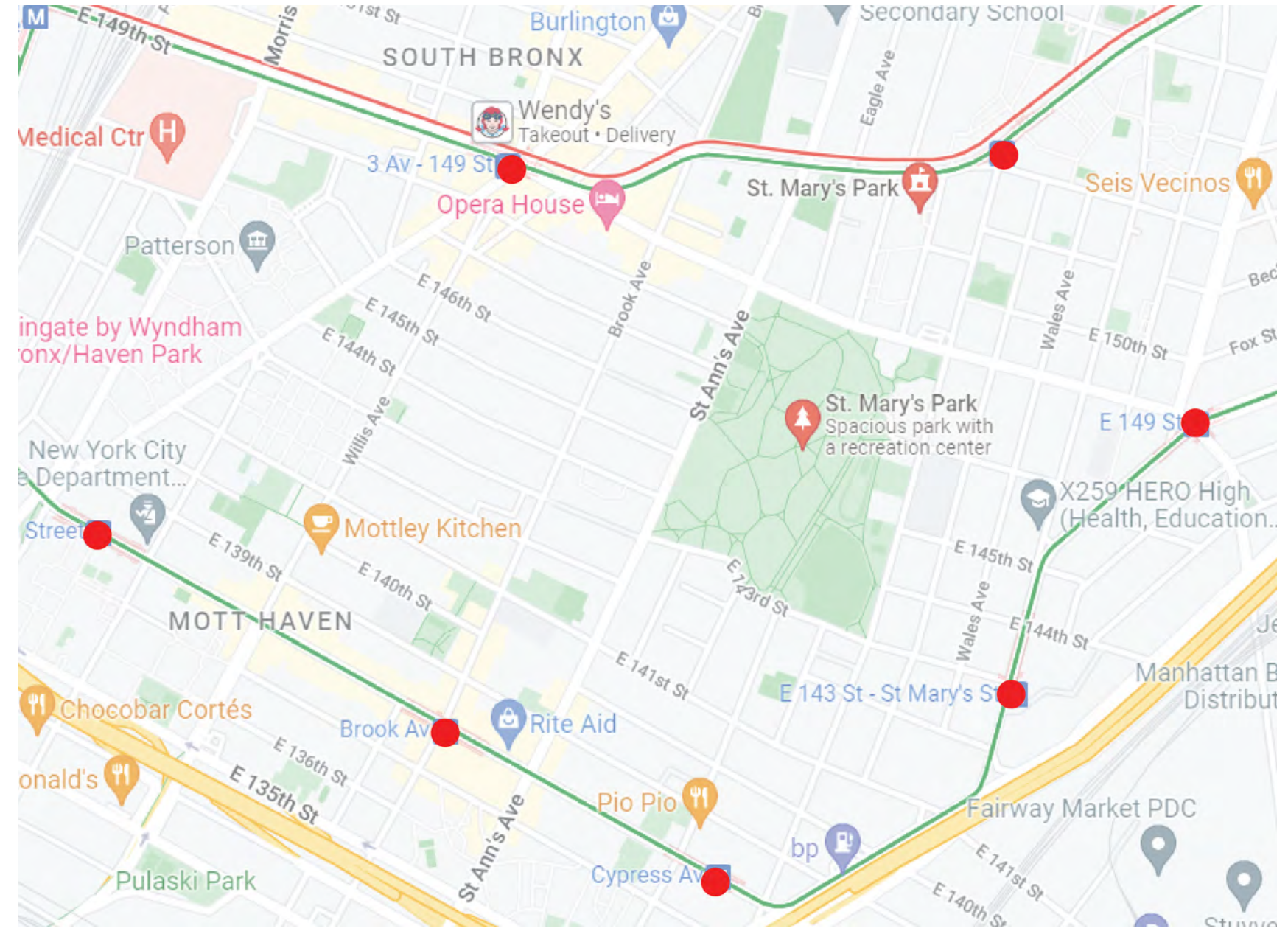


teatro puerto rico



Wayfinding



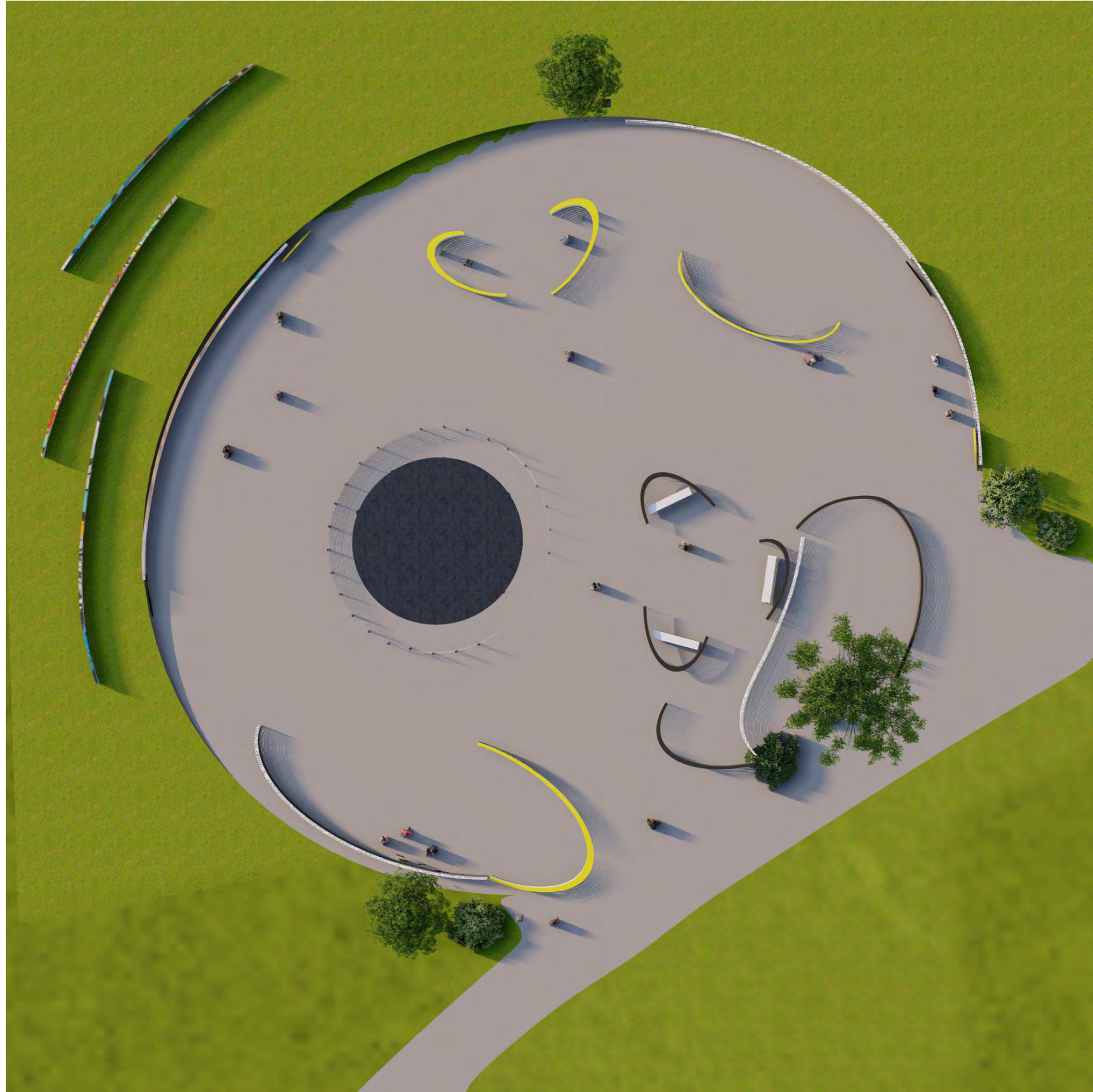


The phonebooths are placed throughout the neighborhood where there is most metro access. This allows for the subway marketing to draw in visitors and utilize the street graphics and phonebooth to direct visitors on where to go.

Wayfinding



Simplified Plan



Site Axon

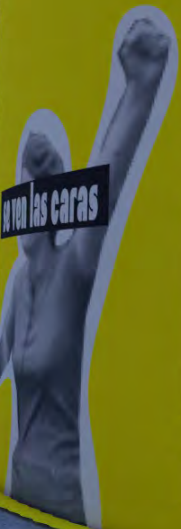


Introduction





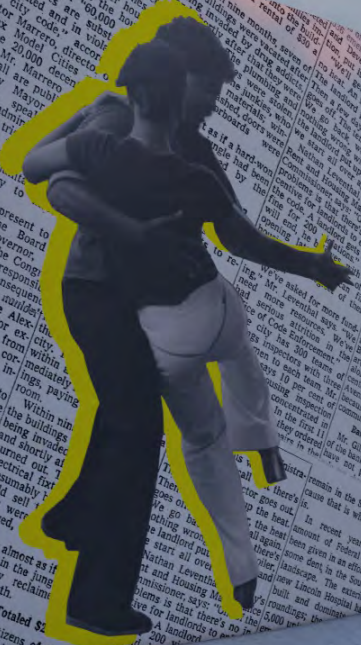
...to re-...
 ...need better educa-...
 ...better health, housing...
 ...maintenance, support services...
 ...said Robert Abrams, the Bronx...
 ...Borough President, who on a...
 ...Governor, the Congress...
 ...every other responsible...
 ...to the Alex...
 ...the most violent blocks in the...
 ...The work was completed...
 ...and families in-...
 ...The landlord puts up the heat...
 ...Within nine months, seven of...
 ...no heat. An inspector goes out...
 ...The landlord puts up the heat...
 ...The best amount of Federal funds ha...
 ...In recent years, a large...
 ...amount of Federal funds ha...
 ...been given in an effort to make...
 ...South Bronx...
 ...to re-...
 ...need more resources. We've...
 ...had serious attrition in the...
 ...Office of Code Enforcement...
 ...The city has 300 teams of...
 ...buildings inspectors with three...
 ...or four men to each team. Mr...
 ...Leventhal says 10 per cent of...
 ...the city's housing inspection...
 ...force has been concentrated in...
 ...the South Bronx. In the first 11...
 ...months of last year they ordered...
 ...5,536 emergency repairs in the...
 ...Banks Are Criticized...
 ...Mr. Gill is critic...
 ...of the banking comm...
 ...have not played th...
 ...Development Administra-...
 ...remain in the South Bron...
 ...cause that is where the a...
 ...In recent years, a large...
 ...amount of Federal funds ha...
 ...been given in an effort to make...
 ...South Bronx...



as told through

PLÁSTICOS

RUBÉN BLADES



Timeline



See

Magnetic plaques with important historical events from the 70's.

Do

Rearrange the events in the order that visitors think they happened based on the context clues.

Learn

The historical significance of Salsa and what else shaped it during the 70's.

Graffiti



See

Several walls with graffiti from local residents.

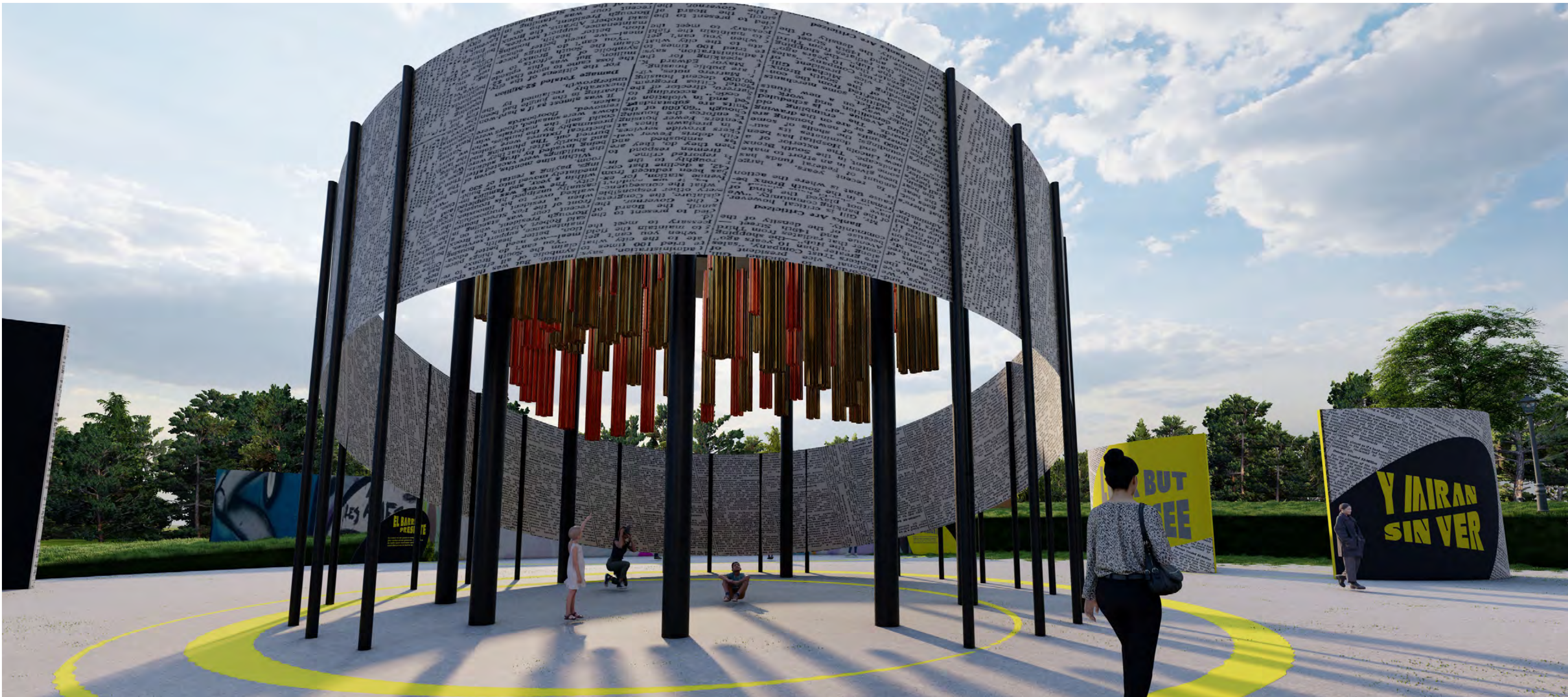
Do

Work with BXArts to graffiti over what is there and add personal style or art to the wall.

Learn

Who lives in this neighborhood and what they choose to express themselves with.

Kaufman Exterior



See

A large musical instrument with graphics and hanging pipes.

Do

Walk under the pipes and set off the sounds to make music with other visitors while seeing footsteps on the ground.

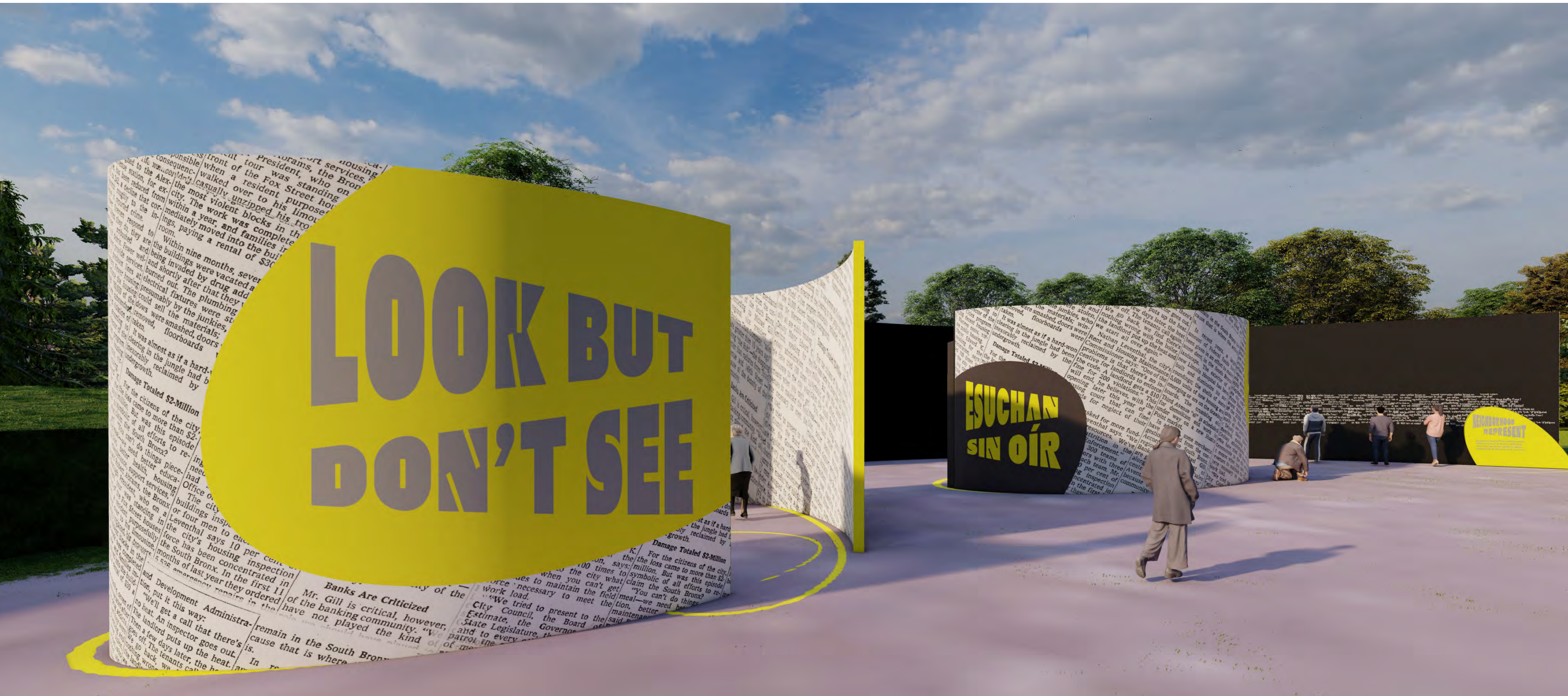
Learn

What a son clave rhythm is as well as how Salsa is a communal music that is made from many different people.

Kaufman Interior



Phonebooth



See

Large curved walls with phonebooths inside of them.

Do

Listen to stories over the phone of people who lived in the neighborhood during the 70's.

Learn

The context of Salsa music and how the political and global climate contributed to its formation.



...of the Bronx, concentrated in the area of the shopping district between 149th and 155th Street. The area is densely packed with tenements, and the buildings are in a state of disrepair. The rent is high, and the conditions are squalid. The people who live there are poor and have no other resources. The situation is a disgrace to the city and a source of shame to the community.

Banks Are Criticized

Mr. Gill is critical, however, of the banking community. "We have not played the kind of role we should have played in the past," he says. "We have been too busy with our own interests to help the community in need."

...of the Bronx, concentrated in the area of the shopping district between 149th and 155th Street. The area is densely packed with tenements, and the buildings are in a state of disrepair. The rent is high, and the conditions are squalid. The people who live there are poor and have no other resources. The situation is a disgrace to the city and a source of shame to the community.

Damage Totaled \$2-Million

For the citizens of the city, the loss came to more than \$2 million. But was this episode a symbol of all efforts to improve the South Bronx? You can't do things better health, support services, and so on. President, Fox Street, and so on.

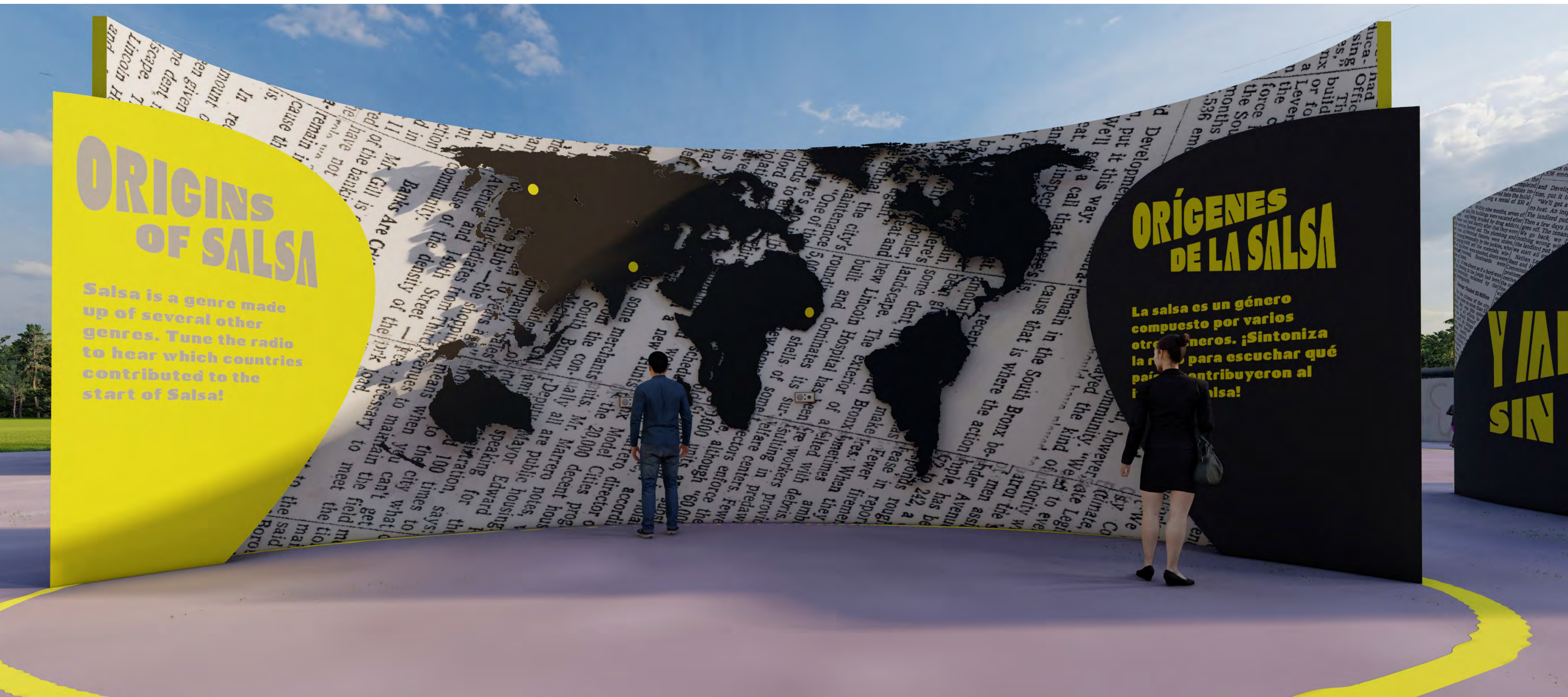
...of the Bronx, concentrated in the area of the shopping district between 149th and 155th Street. The area is densely packed with tenements, and the buildings are in a state of disrepair. The rent is high, and the conditions are squalid. The people who live there are poor and have no other resources. The situation is a disgrace to the city and a source of shame to the community.

YAIRAN SIN VER

Phonebooth



World Radio



See

A world map with a radio in it.

Do

Change the dial to different radio stations with correlating countries.

Learn

The different genres that make up Salsa and how global immigration contributed to it.

Album Artwork



See

Large album covers in greyscale.

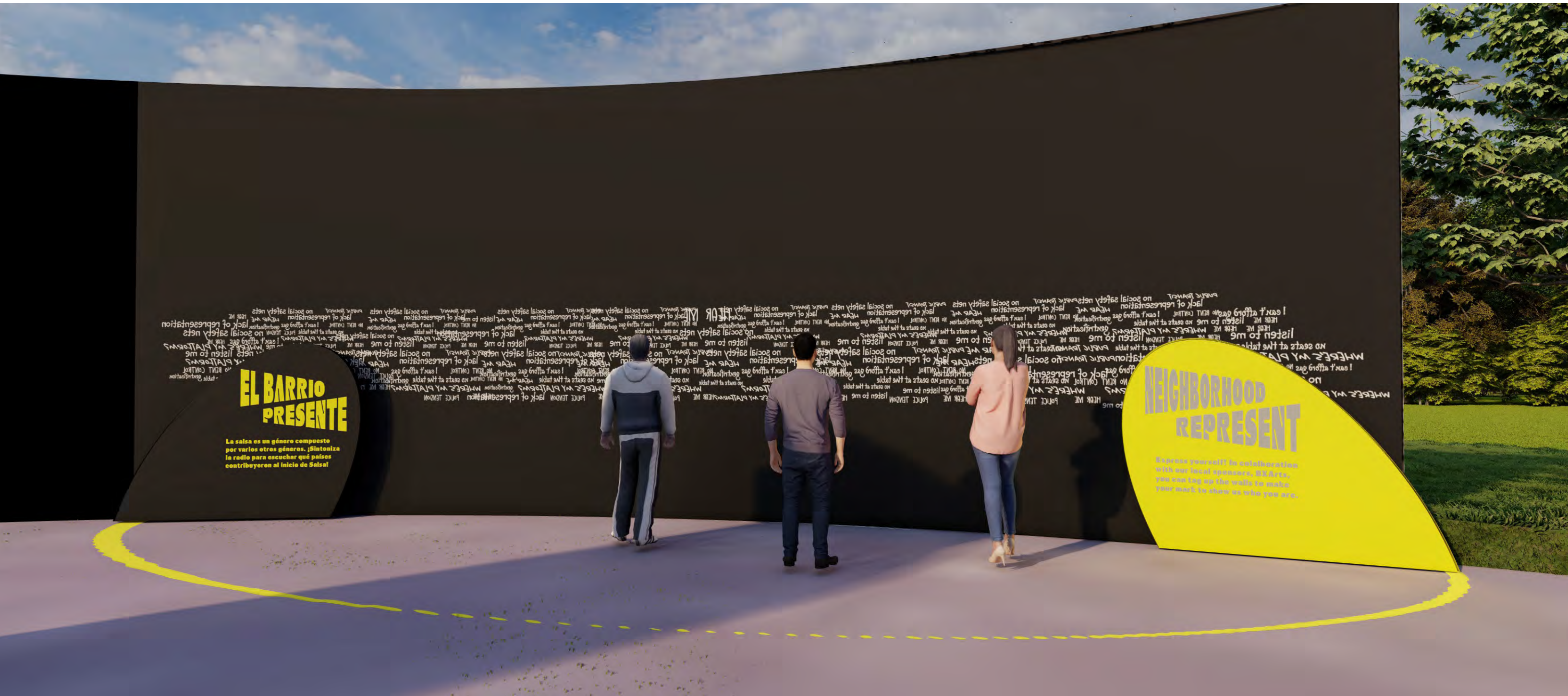
Do

Walk around and view the graphic treatment overlaid on the album art.

Learn

The end of Salsa Music came when the greed of record companies got too great.

Participatory Wall



See

A wall of handwritten responses with a question asking “what needs to change in the neighborhood and who can help?”

Do

Answer the question and provide their own resources for others in the community.

Learn

The neighborhood has a say in what happens and is capable of recognizing problems within itself.

Schedules and Lists

Symbols List



North Arrow

Call out



Drawing Title



Section Cut

Sarah Felter

Exhibition & Experience Design

Fashion Institute of Technology
School of Graduate Studies
272 West 27th St
New York, NY 10011

Project



St. Mary's Park
South Bronx, NY

Drawings for design
intent ONLY

Client



Key Plan



Drawn By Sarah Felter

Scale

Date 12-09-2022

Location

Drawing No. EX 2.01

Material Schedule

Material	Code	Description	Finish	Location
Fabric	FB.01	Stretch fabric with aluminum frame, sunshade	Opaque, direct print	Throughout exhibit
Fabric	FB.02	Stretch fabric with aluminum frame, sunshade	Translucent, direct print	Throughout exhibit
PVC	PV.01	PVC panel over aluminum frame, UV resistant	Opaque, direct print	Throughout exhibit
PVC	PV.02	Plastic overlay for graphics	Translucent various colors	Section 06A
Aluminum	AL.01	Aluminum tubes, 4"	Powder coat black	Section 04A exterior
Steel	ST.01	Steel support, 1'	Powder coat black	Section 04A interior
Steel	ST.02	Steel support for pipes, 4"	Powder coat black	Section 04A interior
Brass	BR.01	4" brass pipe	Natural finish	Section 04A interior
Bronze	BZ.01	4" bronze pipe	Natural finish	Section 04A interior
Bronze	BZ.02	4" bronze hammer to strike pipes	Natural finish	Section 04A interior
Vinyl	VI.02	Vinyl exterior finish	Direct Print	Throughout exhibit

Sarah Felter

Exhibition & Experience Design

Fashion Institute of Technology
School of Graduate Studies
272 West 27th St
New York, NY 10011

Project



St. Mary's Park
South Bronx, NY

Drawings for design
intent ONLY

Client



Key Plan



Drawn By Sarah Felter

Scale

Date 12-09-2022

Location

Drawing No. EX 2.02

Graphic Schedule

Code	Sign Type	Description
Section 01A		
01A.01.GR01	A	Main introduction direct print on sunshade
01A.02.GR01	A	Main introduction direct print on sunshade
Section 02A		
02A.01.GR01	A	Area introduction direct print on sunshade
02A.01.GR01	A	Area introduction direct print on sunshade
02A.02.GR01	A	Activity directive direct print on sunshade
02A.02.GR01	A	Activity directive direct print on sunshade
02A.03.GR01	A	Immersive graphic direct print on sunshade
Section 03A		
03A.01.GR01	B	Area introduction direct print on PVC panel
03A.01.GR01	B	Area introduction direct print on PVC panel
03A.02.GR01	B	Activity directive direct print on PVC panel
03A.02.GR01	B	Activity directive direct print on PVC panel
03A.03.GR01	C	Canvas for graffiti activity
03A.03.GR01	C	Canvas for graffiti activity
03A.03.GR01	C	Canvas for graffiti activity
03A.03.GR01	C	Canvas for graffiti activity
03A.03.GR01	C	Canvas for graffiti activity

Sarah Felter

Exhibition & Experience Design

Fashion Institute of Technology
School of Graduate Studies
272 West 27th St
New York, NY 10011

Project



St. Mary's Park
South Bronx, NY

Drawings for design
intent ONLY

Client



Key Plan



Drawn By Sarah Felter

Scale

Date 12-09-2022

Location

Drawing No. EX 2.03

Graphic Schedule

Code	Sign Type	Description
Section 04A		
04A.01.GR01	A	Area introduction direct print on sunshade
04A.02.GR01	A	Activity directive direct print on sunshade
04A.02.GR01	A	Activity directive direct print on sunshade
04A.03.GR01	A	Immersive graphic direct print on sunshade
Section 05A		
05A.01.GR01	A	Area introduction direct print on sunshade
05A.01.GR01	A	Area introduction direct print on sunshade
05A.02.GR01	A	Activity directive direct print on sunshade
05A.02.GR01	A	Activity directive direct print on sunshade
05A.03.GR01	A	Immersive graphic direct print on sunshade
Section 06A		
06A.01.GR01	A	Area introduction direct print on sunshade
06A.02.GR01	A	Content graphic direct print on sunshade
06A.02.GR01	A	Content graphic direct print on sunshade
06A.02.GR01	A	Content graphic direct print on sunshade
06A.02.GR01	A	Content graphic direct print on sunshade
Section 07A		
07A.01.GR01	A	Area introduction direct print on sunshade
07A.01.GR01	A	Area introduction direct print on sunshade
07A.02.GR01	A	Activity directive direct print on sunshade

Sarah Felter

Exhibition & Experience Design

Fashion Institute of Technology
School of Graduate Studies
272 West 27th St
New York, NY 10011

Project



St. Mary's Park
South Bronx, NY

Drawings for design
intent ONLY

Client



Key Plan



Drawn By Sarah Felter

Scale

Date 12-09-2022

Location

Drawing No. EX 2.03

Graphic Schedule

Code	Sign Type	Description
Section 07A		
07A.02.GR01	A	Activity directive direct print on sunshade
07A.03.GR01	A	Content graphic direct print on sunshade
Section 08A		
08A.01.GR01	A	Area introduction direct print on sunshade
08A.01.GR01	A	Area introduction direct print on sunshade
08A.02.GR01	A	Activity directive direct print on sunshade
08A.02.GR01	A	Activity directive direct print on sunshade

Sarah Felter

Exhibition & Experience Design

Fashion Institute of Technology
School of Graduate Studies
272 West 27th St
New York, NY 10011

Project



St. Mary's Park
South Bronx, NY

Drawings for design
intent ONLY

Client



Key Plan



Drawn By Sarah Felter

Scale

Date 12-09-2022

Location

Drawing No. EX 2.03

Graphic Specification List

Sign Type

Description

- A Direct print on stretch fabric. Sunshade with UV protection (moss)
- B Direct print on PVC panel with UV topcoat
- C Stretch canvas for painting
- D Vinyl print

Sarah Felter

Exhibition & Experience Design

Fashion Institute of Technology
School of Graduate Studies
272 West 27th St
New York, NY 10011

Project



St. Mary's Park
South Bronx, NY

Drawings for design
intent ONLY

Client



Key Plan



Drawn By Sarah Felter

Scale

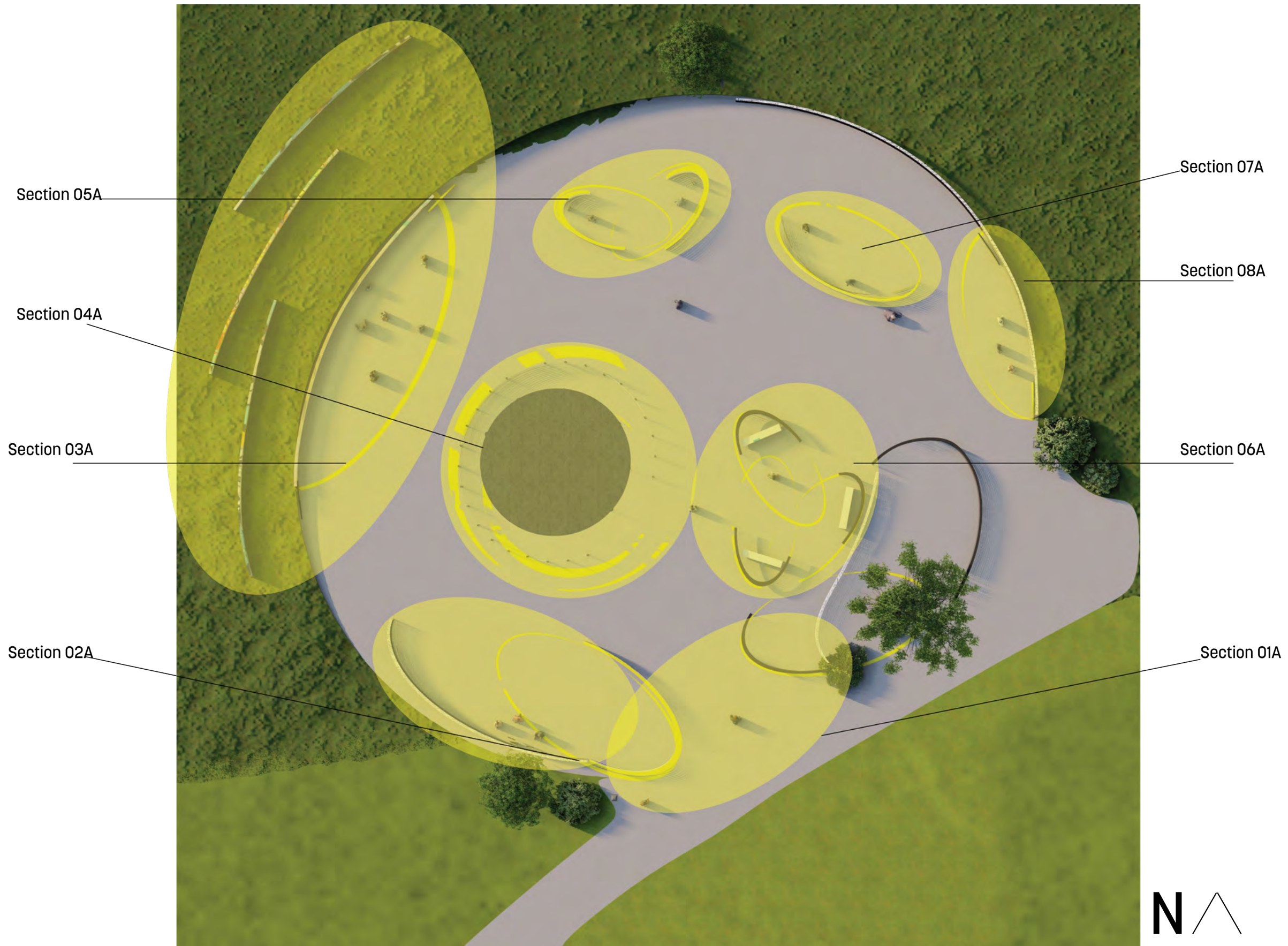
Date 12-09-2022

Location

Drawing No. EX 2.04

Plans, Sections, & Elevations

Area Location Plan



Sarah Felter

Exhibition & Experience Design

Fashion Institute of Technology
 School of Graduate Studies
 272 West 27th St
 New York, NY 10011

Project



St. Mary's Park
 South Bronx, NY

Drawings for design
 intent ONLY

Client



Key Plan



Drawn By Sarah Felter

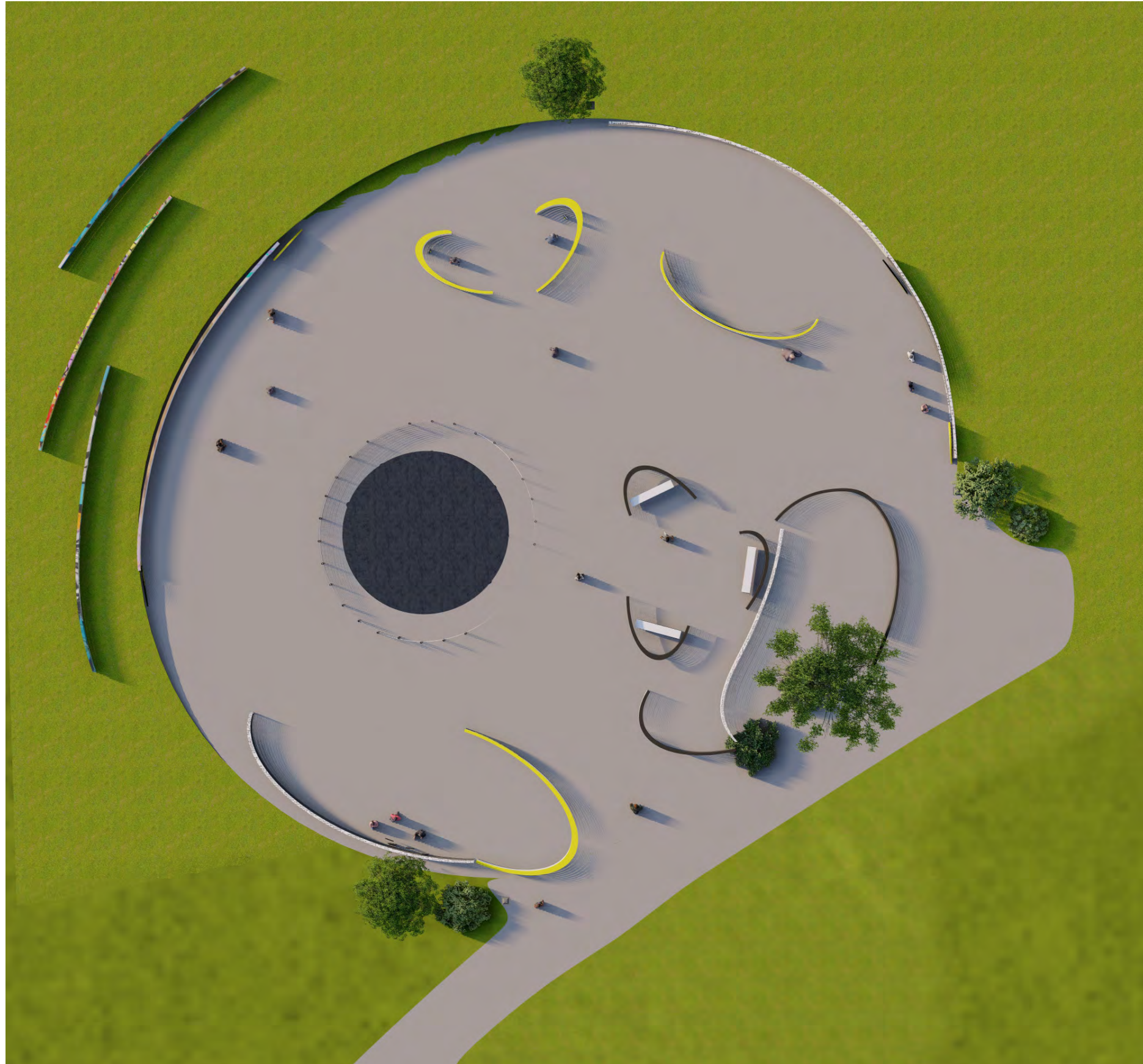
Scale

Date 12-09-2022

Location

Drawing No. EX 3.01

Simplified Plan



Sarah Felter

Exhibition & Experience Design

Fashion Institute of Technology
School of Graduate Studies
272 West 27th St
New York, NY 10011

Project



St. Mary's Park
South Bronx, NY

Drawings for design
intent ONLY

Client



Key Plan



Drawn By Sarah Felter

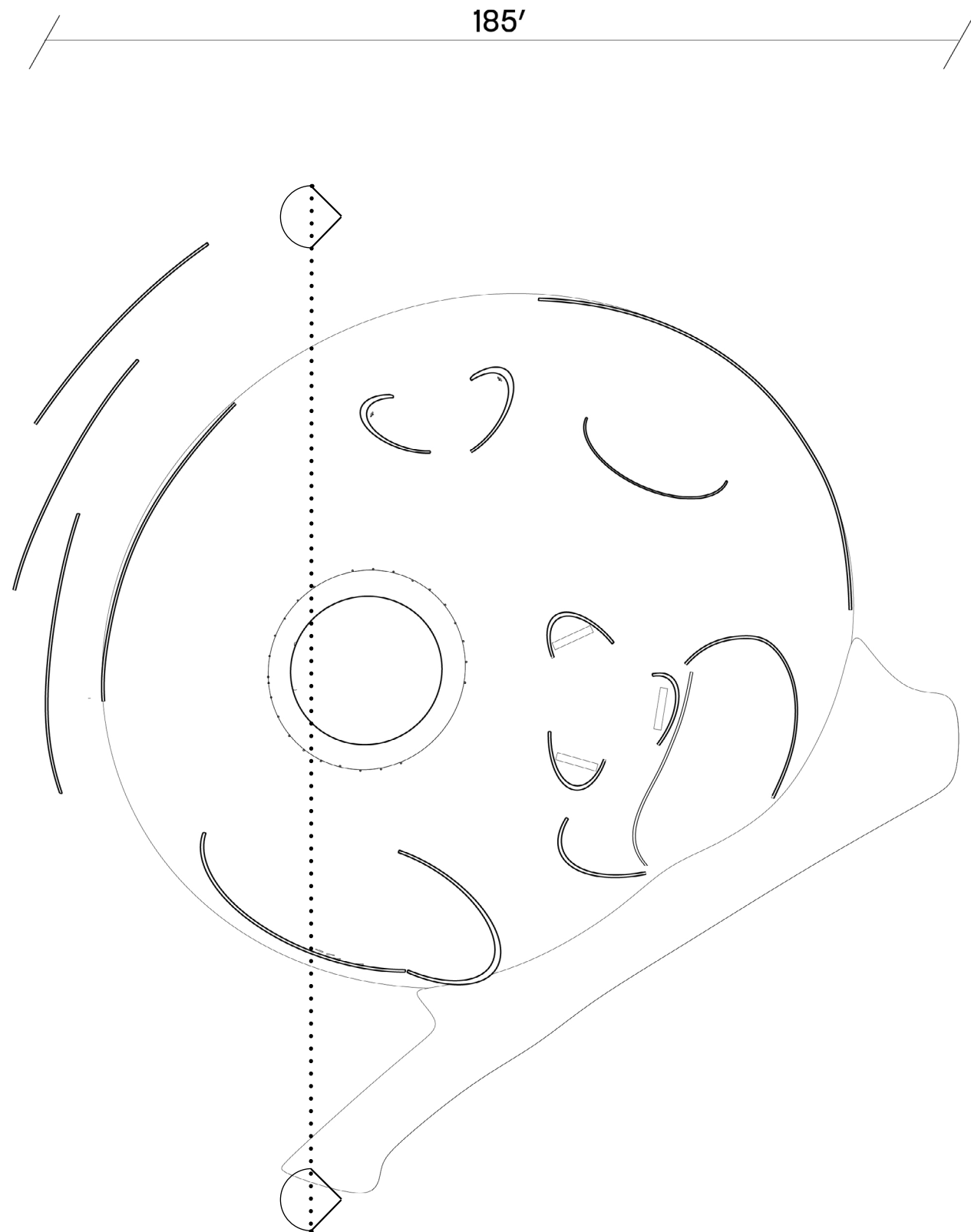
Scale

Date 12-09-2022

Location

Drawing No. EX 3.02

Dimension Plan



184'



Sarah Felter

Exhibition & Experience Design

Fashion Institute of Technology
School of Graduate Studies
272 West 27th St
New York, NY 10011

Project



St. Mary's Park
South Bronx, NY

Drawings for design
intent ONLY

Client



Key Plan



Drawn By Sarah Felter

Scale

Date 12-09-2022

Location

Drawing No. EX 3.03

Material Plan

Sarah Felter

Exhibition & Experience Design

Fashion Institute of Technology
 School of Graduate Studies
 272 West 27th St
 New York, NY 10011

Project



St. Mary's Park
 South Bronx, NY

Drawings for design
 intent ONLY

Client



Key Plan



Drawn By Sarah Felter

Scale

Date 12-09-2022

Location

Drawing No. EX 3.04

FB.01

VI.01

VI.01

FB.01

FB.01

FB.01

VI.01

VI.01

FB.01

FB.02

VI.01

FB.02

VI.01

PV.01

VI.01

FB.01

ST.01

PV.02

AL.01

PV.02

PV.02

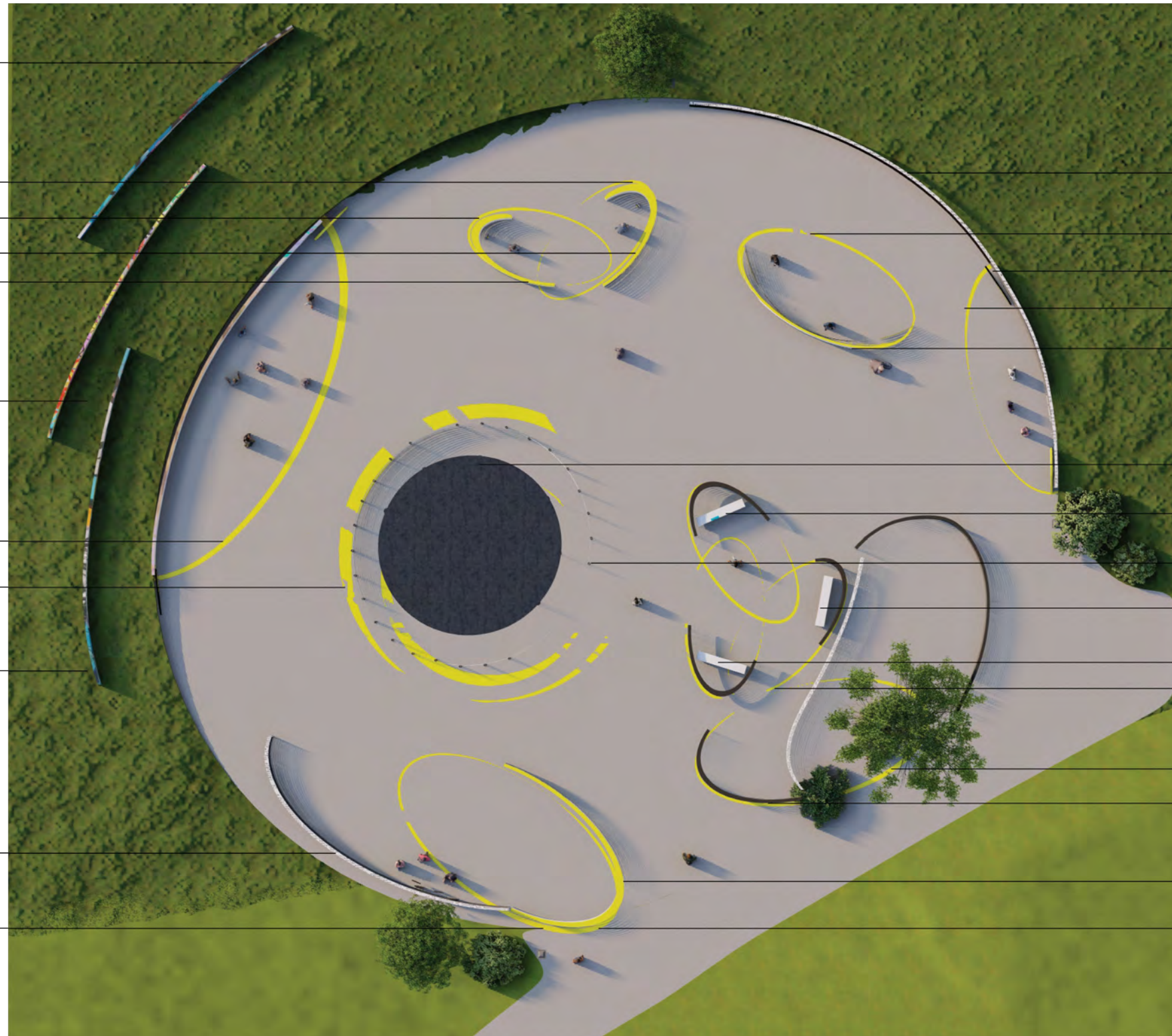
VI.01

VI.01

FB.01

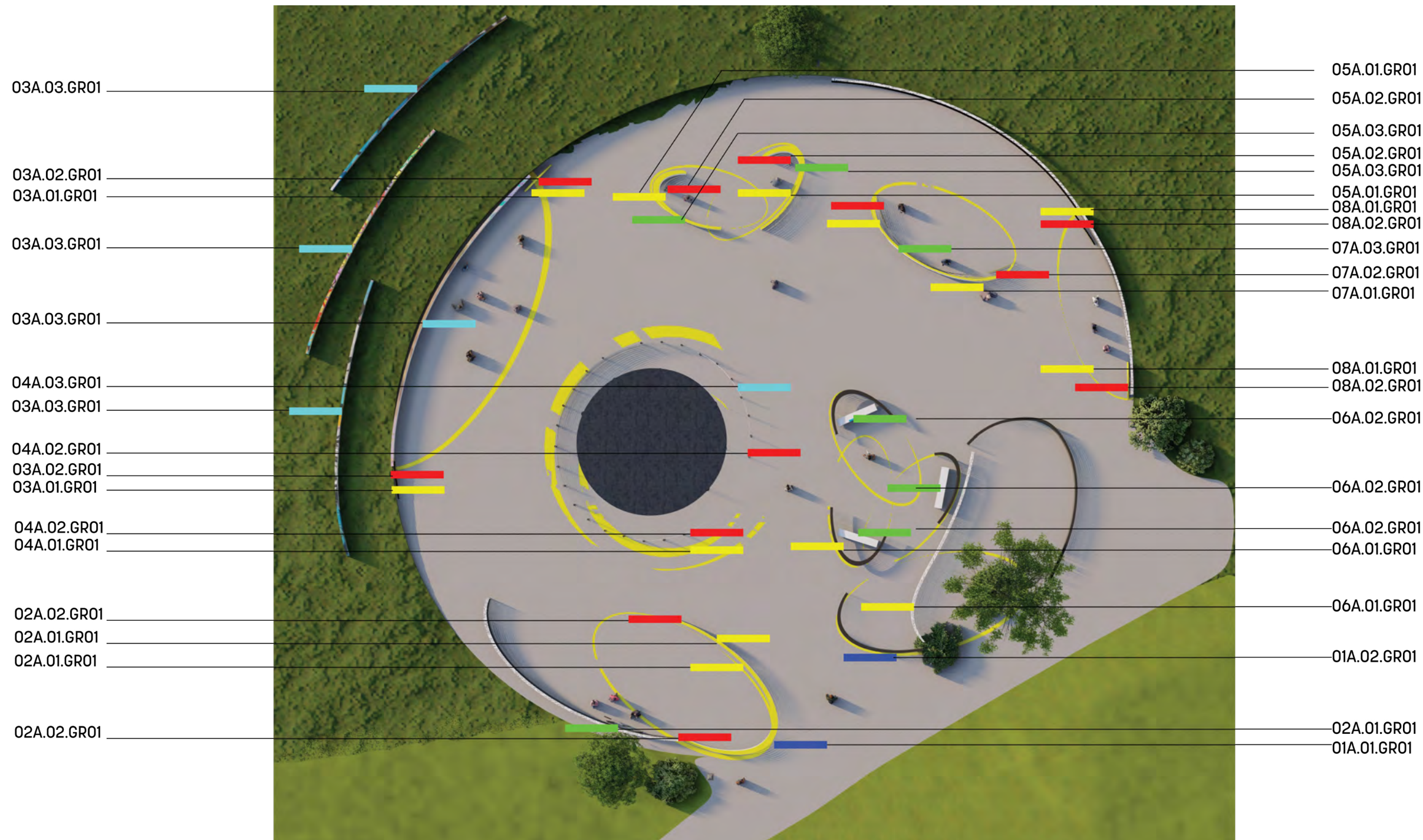
FB.01

VI.01



Graphic Location Plan

- directional
- immersive
- content graphics
- exhibit intro
- area intro



Sarah Felter

Exhibition & Experience Design

Fashion Institute of Technology
 School of Graduate Studies
 272 West 27th St
 New York, NY 10011

Project



St. Mary's Park
 South Bronx, NY

Drawings for design
 intent ONLY

Client



Key Plan



Drawn By Sarah Felter

Scale

Date 12-09-2022

Location

Drawing No. EX 3.05

Sarah Felter

Exhibition & Experience Design

Fashion Institute of Technology
School of Graduate Studies
272 West 27th St
New York, NY 10011

Project



St. Mary's Park
South Bronx, NY

Drawings for design
intent ONLY

Client



Key Plan



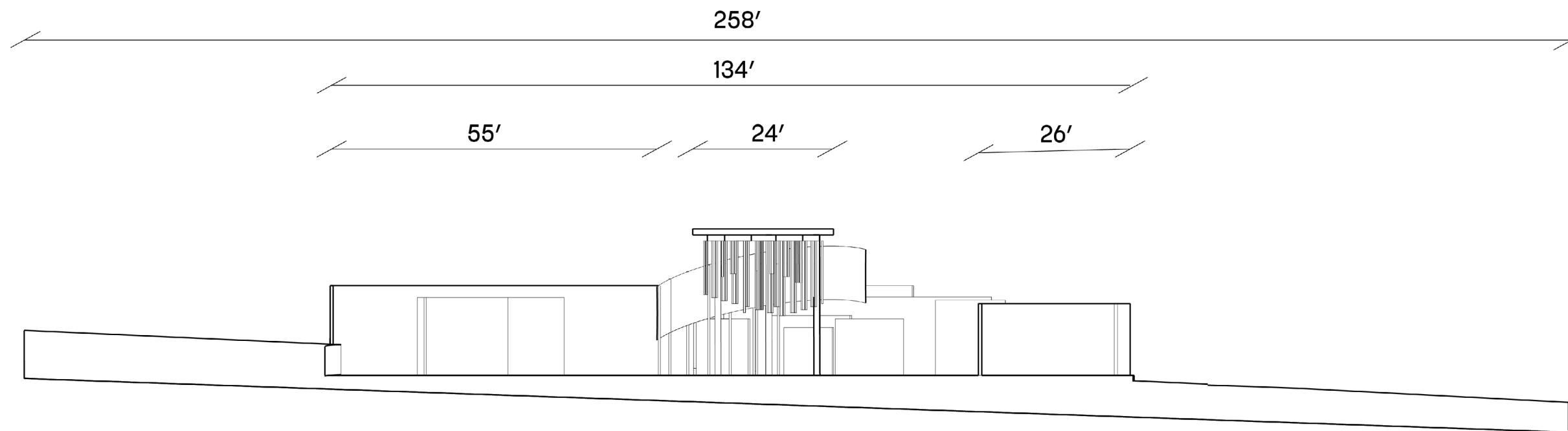
Drawn By Sarah Felter

Scale

Date 12-09-2022

Location

Drawing No. EX 3.06



1 Overall Section 1/8" = 1'
EX 3.06

Sarah Felter

Exhibition & Experience Design

Fashion Institute of Technology
School of Graduate Studies
272 West 27th St
New York, NY 10011

Project



St. Mary's Park
South Bronx, NY

Drawings for design
intent ONLY

Client



Key Plan



Drawn By Sarah Felter

Scale

Date 12-09-2022

Location

Drawing No. EX 3.07



1

EX 3.07

Overall Section 1/4" = 1'

Sarah Felter

Exhibition & Experience Design

Fashion Institute of Technology
School of Graduate Studies
272 West 27th St
New York, NY 10011

Project



St. Mary's Park
South Bronx, NY

Drawings for design
intent ONLY

Client



Key Plan



Drawn By Sarah Felter

Scale

Date 12-09-2022

Location

Drawing No.



1

Back Elevation

EX 3.08



2

Front Elevation

EX 3.09

Graphics

Color Palette



patrol the streets. The number of men assigned to the Alexander Avenue station, for example, has been reduced from 272 to 242, a decline that corresponds roughly to the increase in reported crime.

Fewer firemen respond to fires. When they do, they are sometimes ambushed and pelted with debris. Fewer welfare workers provide services, resulting in pre-dawn lines at welfare centers. Fewer housing inspectors enforce the housing code, although "60,000 of the 80,000 units are substandard, dilapidated and in violation of the city code," according to Victor Marrero, director of the Bronx Model Cities program. Of the 20,000 decent housing units, Mr. Marrero notes, virtually all are public housing.

Deputy Mayor Edward K. Hamilton, speaking for the Lindsay administration, says: "We have tried 100 times to demonstrate to the city what it means when you can't get revenues to maintain the field force necessary to meet the work load.

"We tried to present to the City Council, the Board of Estimate, the Governor, the State Legislature, the Congress and to every other responsible authority what the consequences would be if we couldn't

is generally regarded as one of the most violent blocks in the city. The work was completed within a year, and families immediately moved into the buildings, paying a rental of \$30 a room.

Within nine months, seven of the buildings were vacated after being invaded by drug addicts, and shortly after that they were burned out. The plumbing and electrical fixtures were stolen, presumably by the junkies, who could sell the materials; windows were smashed, doors were removed, floorboards were taken.

It was almost as if a hard-won clearing in the jungle had been inexorably reclaimed by the undergrowth.

Damage Totaled \$2-Million

For the citizens of the city, the loss came to more than \$2-million. But was this episode symbolic of all efforts to reclaim the South Bronx?

"You can't do things piecemeal—we need better education, better health, housing maintenance, support services," said Robert Abrams, the Bronx Borough President, who on a recent tour was standing in front of the Fox Street houses when a resident purposefully walked over to his limousine, casually unzipped his trousers,

and Development Administration, put it this way:

"We'll get a call that there's no heat. An inspector goes out. The landlord puts up the heat. Then a few days later, the heat goes off. The tenants call again. We go back, we find there's nothing wrong with the boiler, the landlord put up the heat and we start all over again."

Nathan Leventhal, the city's Rent and Housing Maintenance Commissioner, says: "One of the problems is that there's no incentive for landlords to enforce the code. A landlord gets a \$10 fine for 200 violations." This will end, he believes, with the opening later this year of a housing court that can fine landlords for neglect of their buildings.

"We've asked for more funding," Mr. Leventhal says. "We need more resources. We've had serious attrition in the Office of Code Enforcement."

The city has 300 teams of buildings inspectors with three or four men to each team. Mr. Leventhal says 10 per cent of the city's housing inspection force has been concentrated in the South Bronx. In the first 11 months of last year they ordered 5,536 emergency repairs in the

remain in the South Bronx because that is where the action is.

In recent years, a large amount of Federal funds has been given in an effort to make some dent in the South Bronx landscape. The exterior of a new Lincoln Hospital has been built and dominates its surroundings; the shells of some 5,000 units of new housing are emerging or are on the drawing boards. The crumbling old Third Avenue "el" is scheduled for demolition and work is under way on a new Hunts Point market.

In addition, some merchants have benefited from the congestion of the South Bronx. According to Michael Gill, regional vice president of Bankers Trust Company, "sales are greater than 10 years ago" along "the Hub"—the shopping center that radiates from Third Avenue and 149th Street — because of the density of the community.

Banks Are Criticized

Mr. Gill is critical, however, of the banking community. "We have not played the kind of role we should have played to



Pantone 7732C



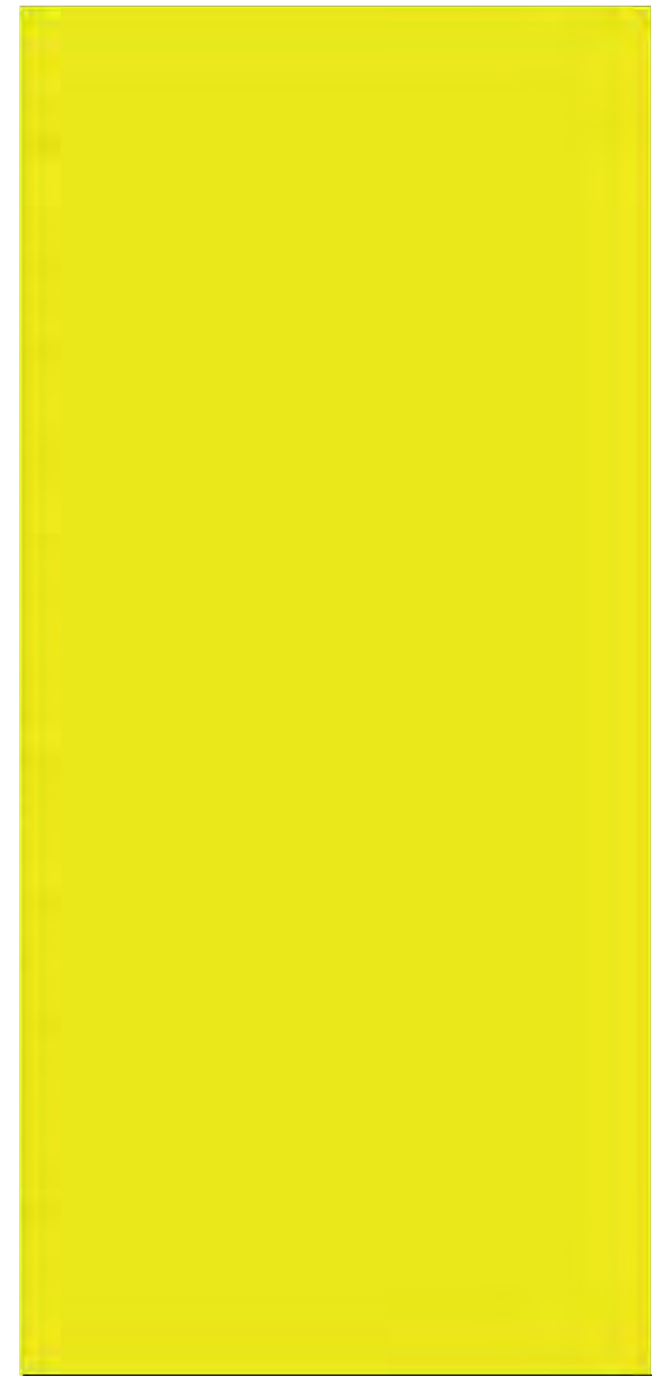
Pantone 485C



Pantone 7688C



Pantone 7455C



Pantone 395C

Reference

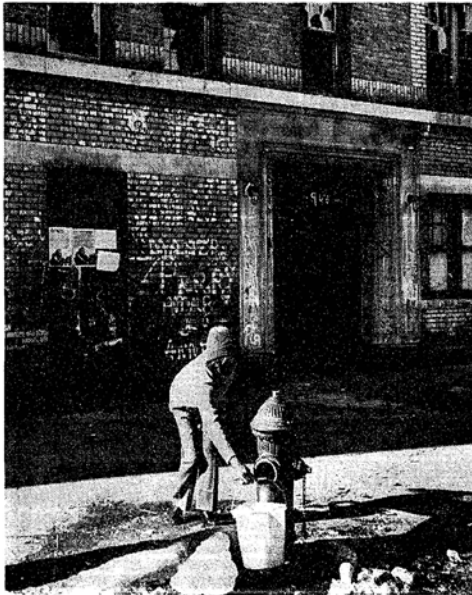
South Bronx: A Jungle Stalked by Fear, Seized by Rage

This is the first of four articles on the South Bronx. The series is based on a four-week study of the community, interviews with hundreds of residents and officials and visits to dozens of the community's institutions.

By MARTIN YERGAN
The fire hydrants are open, Puerto Ricans and other even in this biting cold weather panic and the room-town pumps that provide the block. Its vague border side water supply for drinking. Park Avenue on the way washing and sanitation for Cross Bronx Expressway thousands of tenements in 20 per cent of the north and the Bronx east of the housing in the on the east, encompassing area. When one hydrant freezes neighborhoods as Most 3 over, the residents pry open Morrisania, Bathgate and another.

Packs of wild dogs pick through the rubble and roam the streets, sometimes attacking. Willis Avenue Bridge residents. As protection, many where fear is the over delivers carry dog repellent. emotion in a landscape A dog pugler is murdered by (dogpug). The residents, have long been afraid contract from a rival pugler. A out at night, are now youngster is nearly always to go out during the death outside a school in an streets menaced by 20,000 addicts and 9,000 gang argument over a soda bottle.

Merchants close their stores at moment even though many are armed and some conduct business inside their stores behind bullet-proof glass. "The South Bronx is a city of death," Dr. Harold Wise, found the Martin Luther King Continued on Page 18, Col



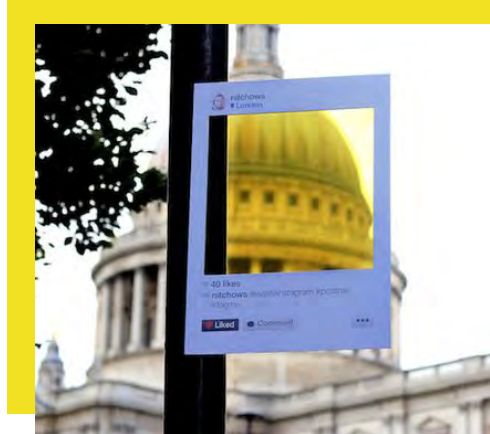
Miss Dorothy River, one of three tenants remaining in her building on Tiffany Street, rear, draws water from hydrant, like 80,000 others in the South Bronx.



A room of an apartment in the group of nine four-story tenements at 1636 and Fox Streets in Mott Park. The city advanced \$2.5-million to builders for renovation in 1976, but breeding addicts burned out tenants.



Packs of wild dogs, such as this group on Fox Street, pick through the rubble and roam the streets.



ROARING ELEPHANTS

se ven las caras

se ven las caras

Lorem ipsum dolor sit amet, consectetur adipiscing elit, sed diam nonummy nibh euismod tincidunt ut laoreet dolore magna aliquam erat volutpat. Ut wisi enim ad minim veniam, quis nostrud exerci tation ullamcorper suscipit lobortis nisl ut aliquip ex ea commodo consequat. Duis autem vel eum iriure dolor in hendrerit in vulputate velit esse molestie consequat, vel illum dolore eu feugiat nulla facilisis at vero eros et accumsan et iusto odio dignissim qui blandit praesent luptatum zzril delenit augue duis dolore te feugait nulla facilisi. Lorem ipsum dolor sit amet, consectetur adipiscing elit, sed diam nonummy nibh euismod tincidunt ut laoreet dolore magna aliquam erat volutpat. Ut wisi enim ad minim veniam, quis nostrud exerci tation



Visual ID System



1"



2"



3"

Waldo Black

ABCDEFGHIJKLMNOPQRSTUVWXYZ

abcdefghijklmnopqrstuvwxyz

1234567890!@#\$%^&*()

logo font

Korolev Rounded Bold

ABCDEFGHIJKLMNOPQRSTUVWXYZ

abcdefghijklmnopqrstuvwxyz

1234567890!@#\$%^&*()

body font

Collateral

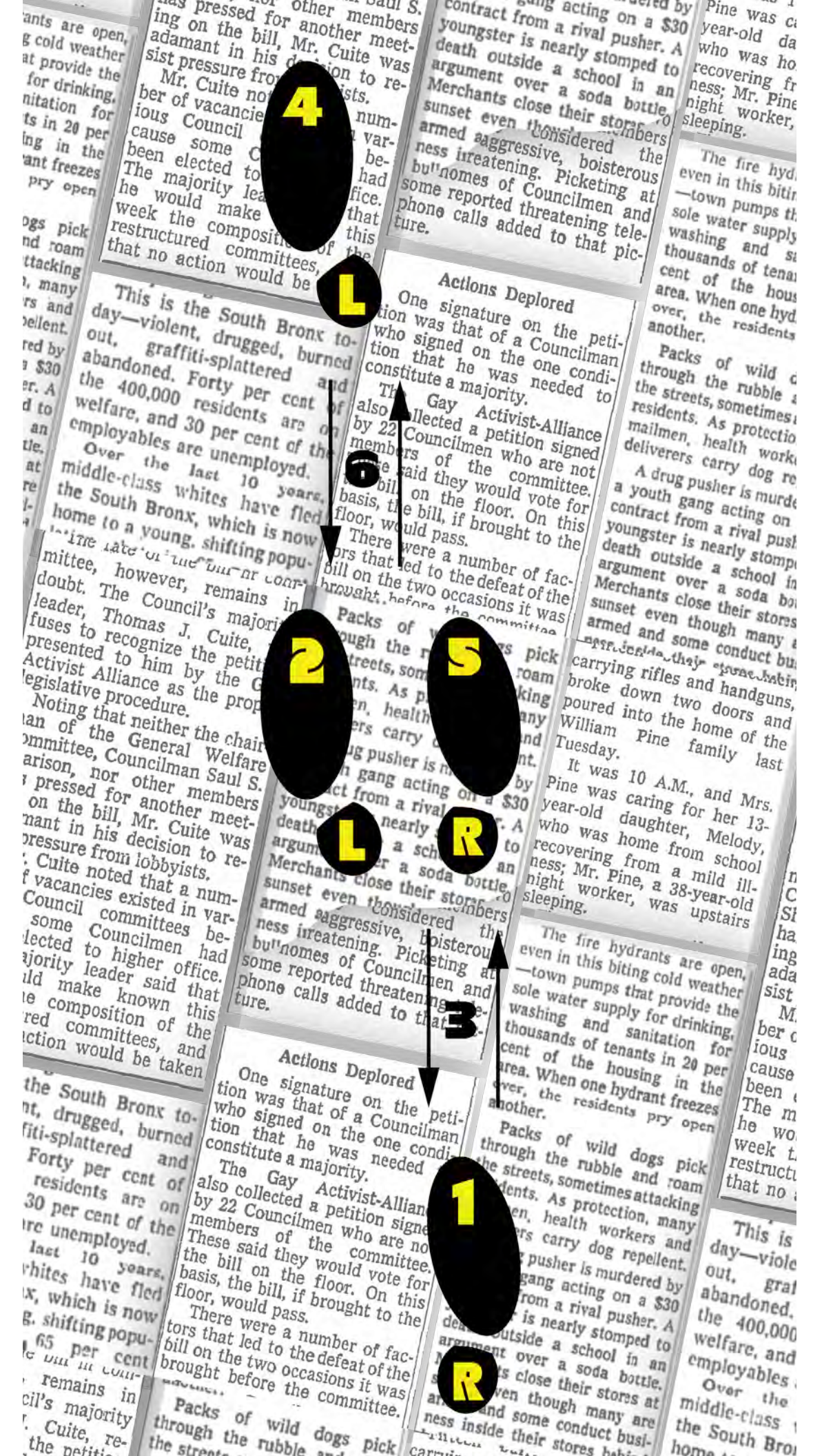


PLÁSTICO

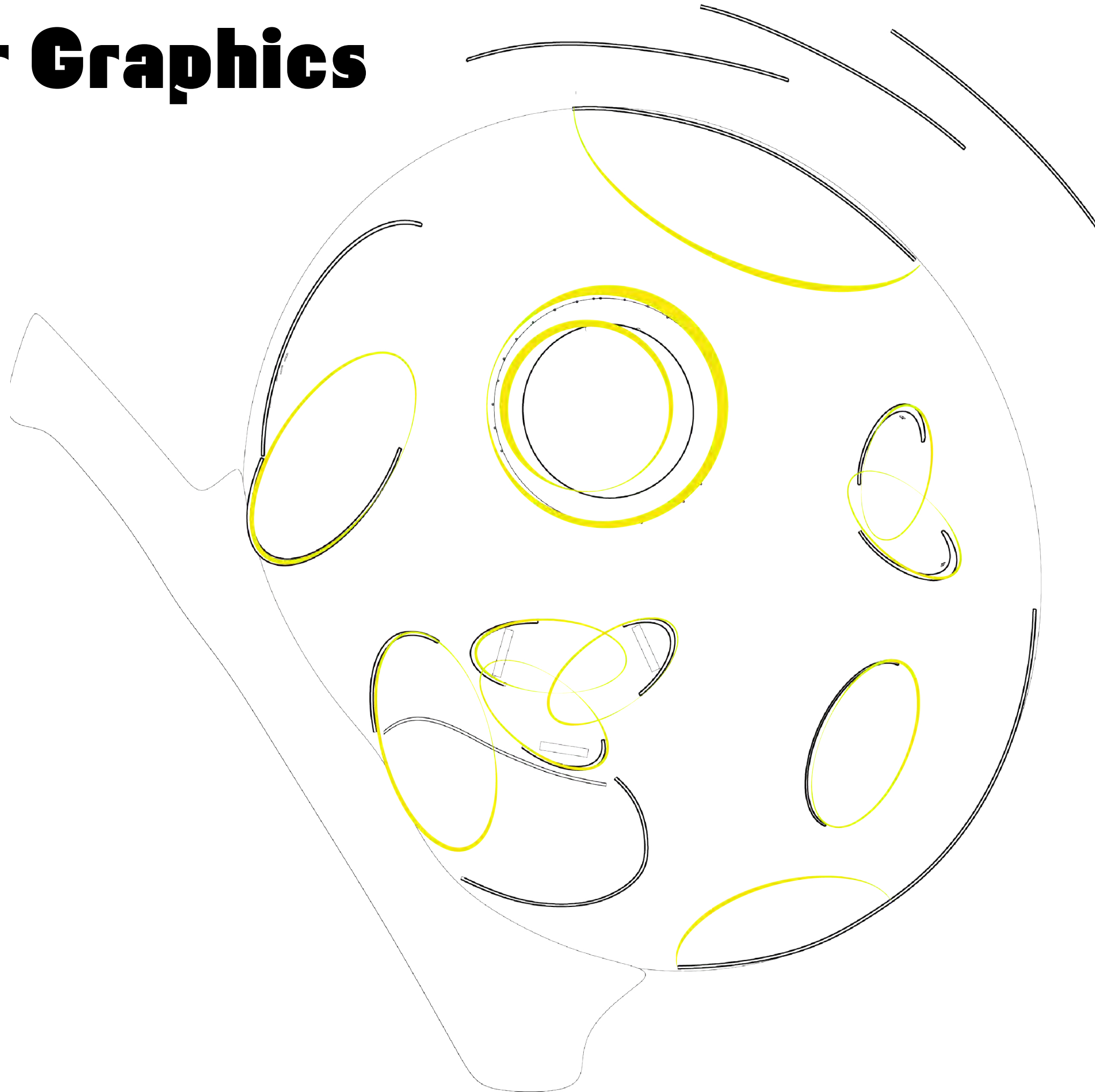
RUBÉN BLADES

se ven las caras

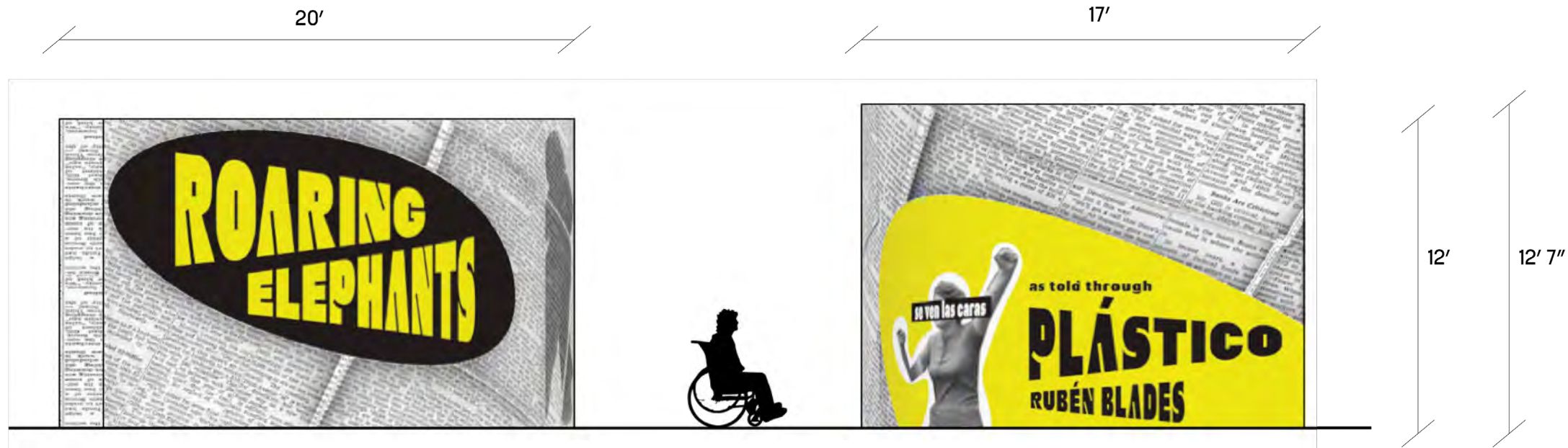
ROARING ELEPHANTS



Floor Graphics



Details



1 Intro Elevation (Front)
EX 5.01



2 Intro Elevation (Back)
EX 5.02

Sarah Felter

Exhibition & Experience Design

Fashion Institute of Technology
School of Graduate Studies
272 West 27th St
New York, NY 10011

Project



St. Mary's Park
South Bronx, NY

Drawings for design
intent ONLY

Client



Key Plan



Drawn By Sarah Felter

Scale

Date 12-09-2022

Location Section 01A

Drawing No. EX 5.01

EX 5.02



1 Flattened Intro Graphic
EX 5.03



2 Flattened Intro Graphic
EX 5.04

Sarah Felter
Exhibition & Experience Design

Fashion Institute of Technology
School of Graduate Studies
272 West 27th St
New York, NY 10011

Project



St. Mary's Park
South Bronx, NY

Drawings for design
intent ONLY

Client



Key Plan



Drawn By Sarah Felter

Scale

Date 12-09-2022

Location Section 01A

Drawing No. EX 5.03

EX 5.04

Sarah Felter

Exhibition & Experience Design

Fashion Institute of Technology
School of Graduate Studies
272 West 27th St
New York, NY 10011

Project



St. Mary's Park
South Bronx, NY

Drawings for design
intent ONLY

Client



Key Plan



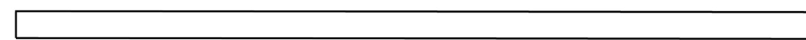
Drawn By Sarah Felter

Scale

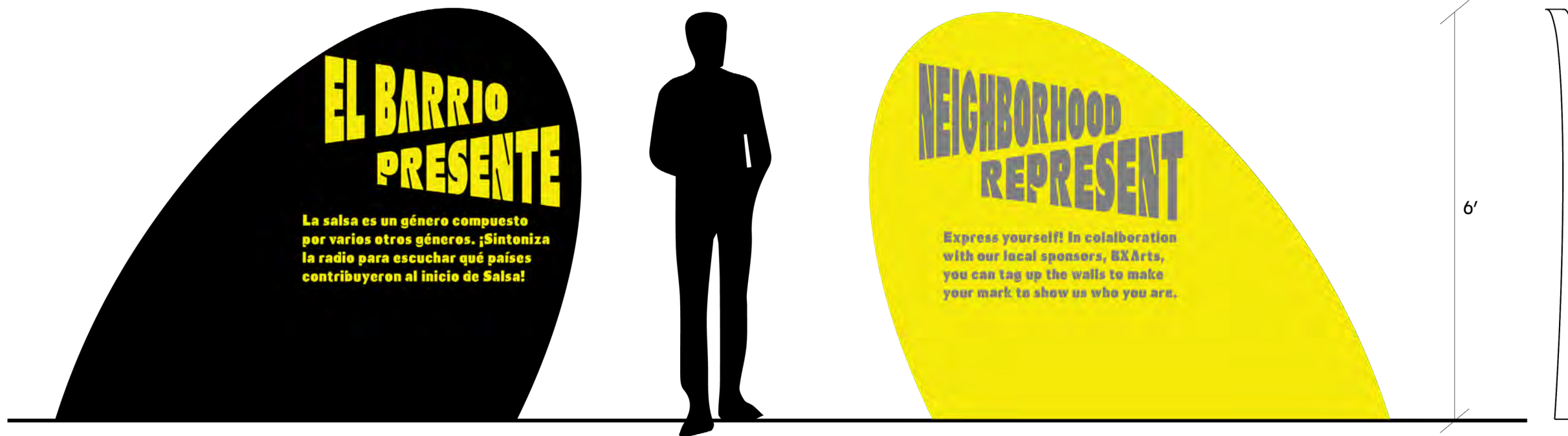
Date 12-09-2022

Location Participatory
Wall graphics in
Section 03A and
08A

Drawing No. EX 5.05



7'4"



1

Directional Detail

EX 5.05

Sarah Felter

Exhibition & Experience Design

Fashion Institute of Technology
School of Graduate Studies
272 West 27th St
New York, NY 10011

Project



St. Mary's Park
South Bronx, NY

Drawings for design
intent ONLY

Client



Key Plan



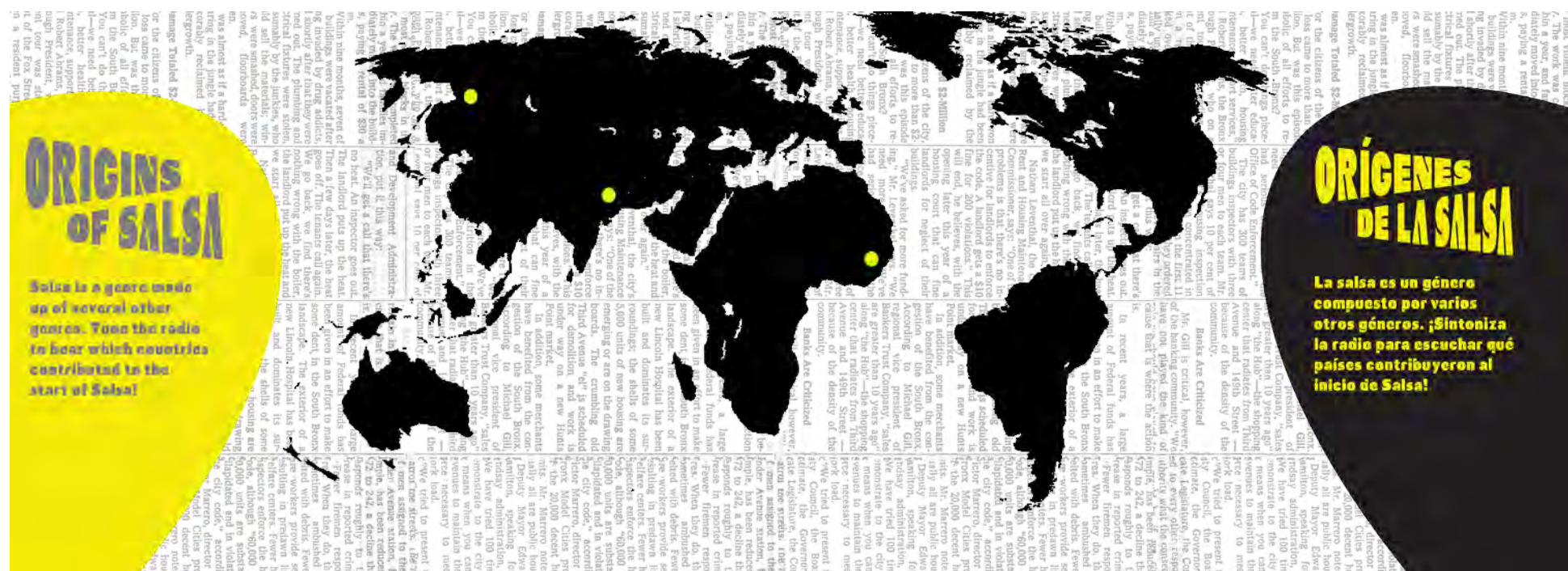
Drawn By Sarah Felter

Scale

Date 12-09-2022

Location World Radio
graphics flattened

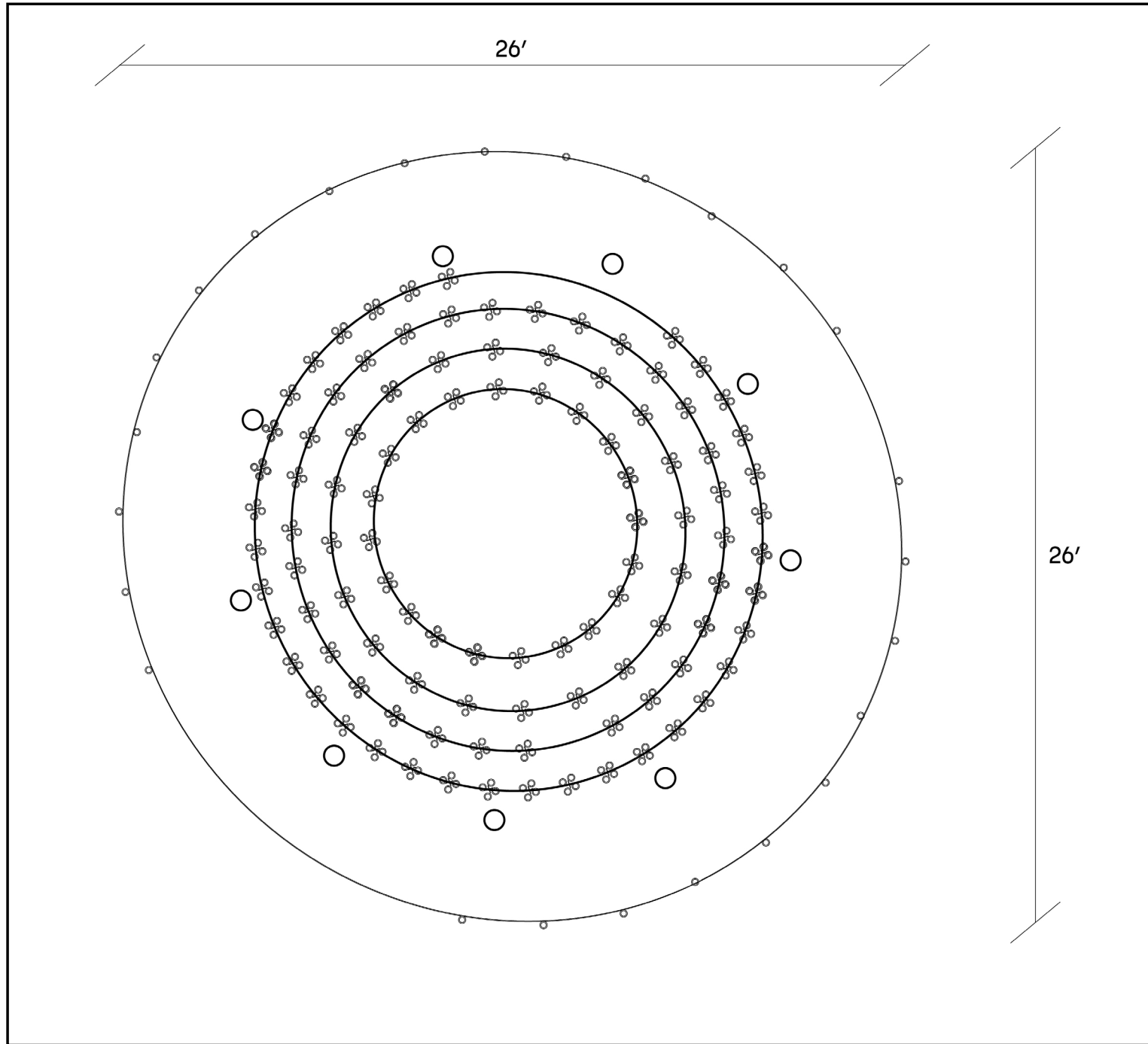
Drawing No. EX 5.06



13'

1 Flattened Content Graphic
EX 5.06

Kaufman Spec 1



1 Plan 1/4" = 1'
EX 5.07

Sarah Felter

Exhibition & Experience Design

Fashion Institute of Technology
School of Graduate Studies
272 West 27th St
New York, NY 10011

Project



St. Mary's Park
South Bronx, NY

Drawings for design
intent ONLY

Client



Key Plan



Drawn By Sarah Felter

Scale

Date 12-09-2022

Location Centerpiece,
section 04A

Drawing No. EX 5.07

Kaufman Spec 1

Sarah Felter

Exhibition & Experience Design

Fashion Institute of Technology
School of Graduate Studies
272 West 27th St
New York, NY 10011

Project



St. Mary's Park
South Bronx, NY

Drawings for design
intent ONLY

Client



Key Plan



Drawn By Sarah Felter

Scale

Date 12-09-2022

Location Centerpiece,
section 04A

Drawing No. EX 5.08

39' 4"

29'

24' 5"

15'

1

Section 1/4" = 1'

EX 5.08

Kaufman Spec 4

Sarah Felter

Exhibition & Experience Design

Fashion Institute of Technology
School of Graduate Studies
272 West 27th St
New York, NY 10011

Project



St. Mary's Park
South Bronx, NY

Drawings for design
intent ONLY

Client



Key Plan



Drawn By Sarah Felter

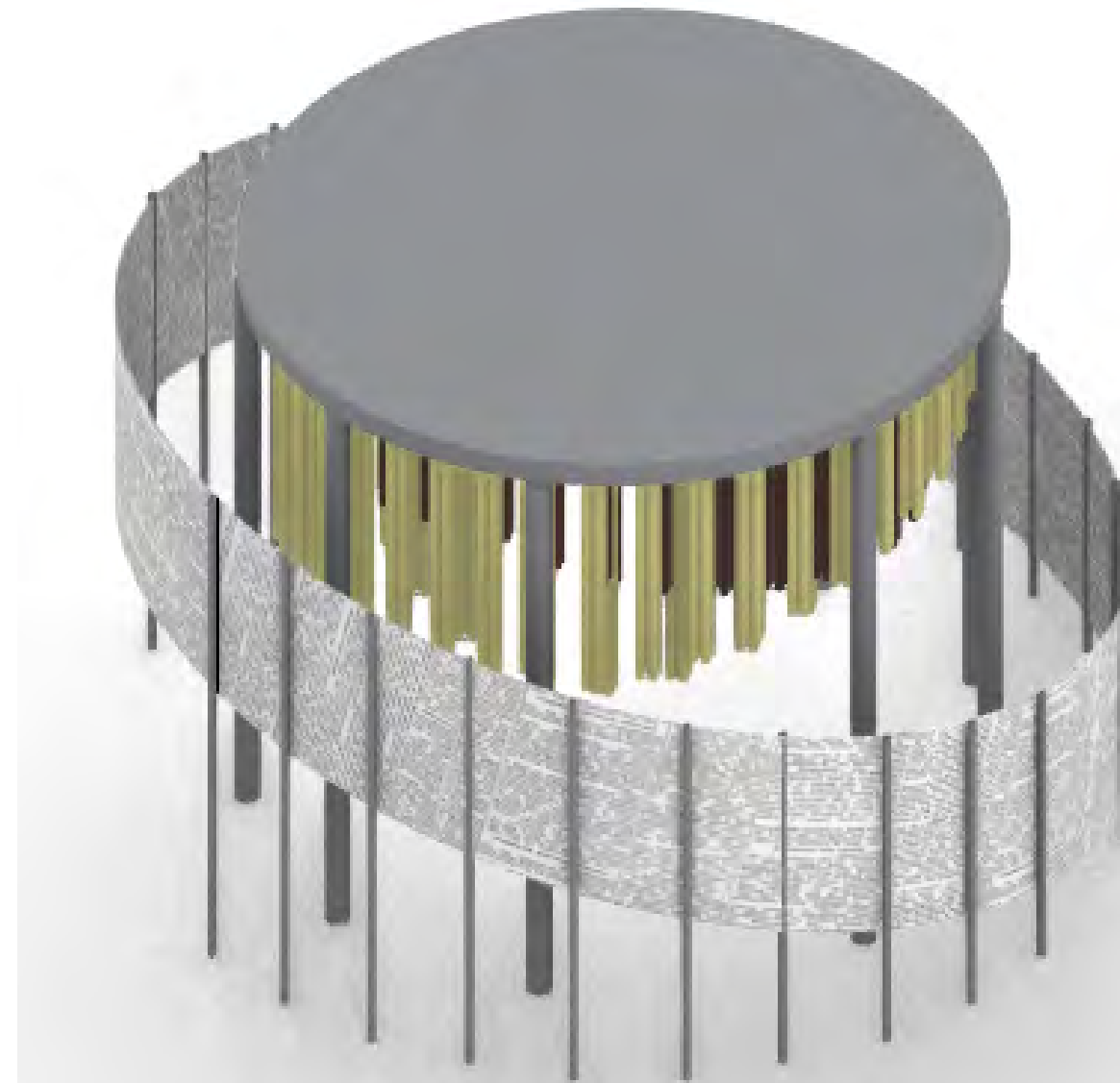
Scale

Date 12-09-2022

Location Centerpiece,
section 04A

Drawing No. EX 5.09

EX 5.10



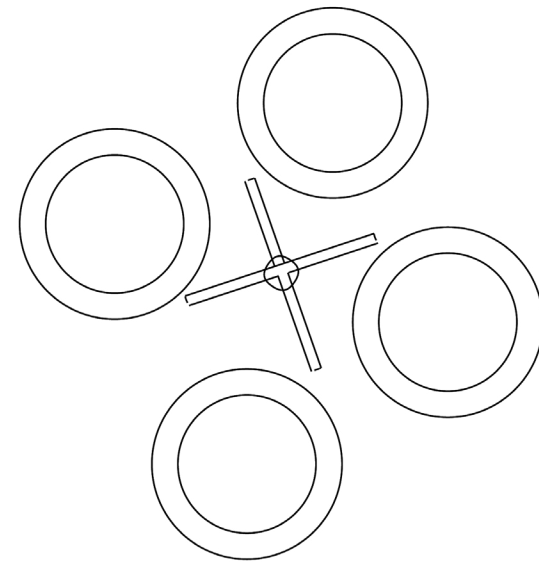
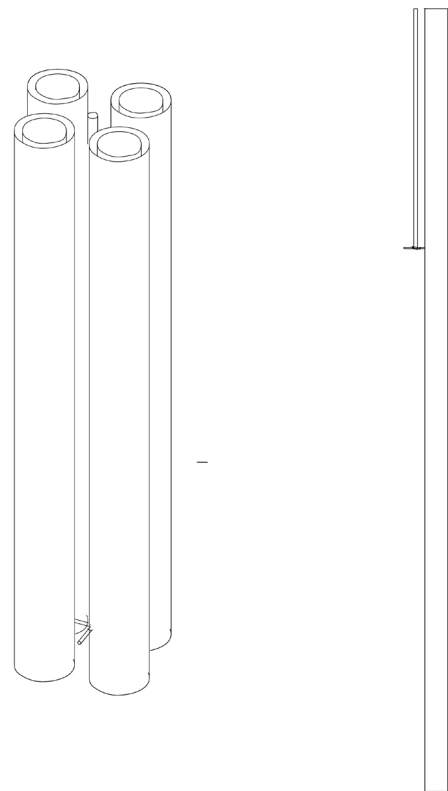
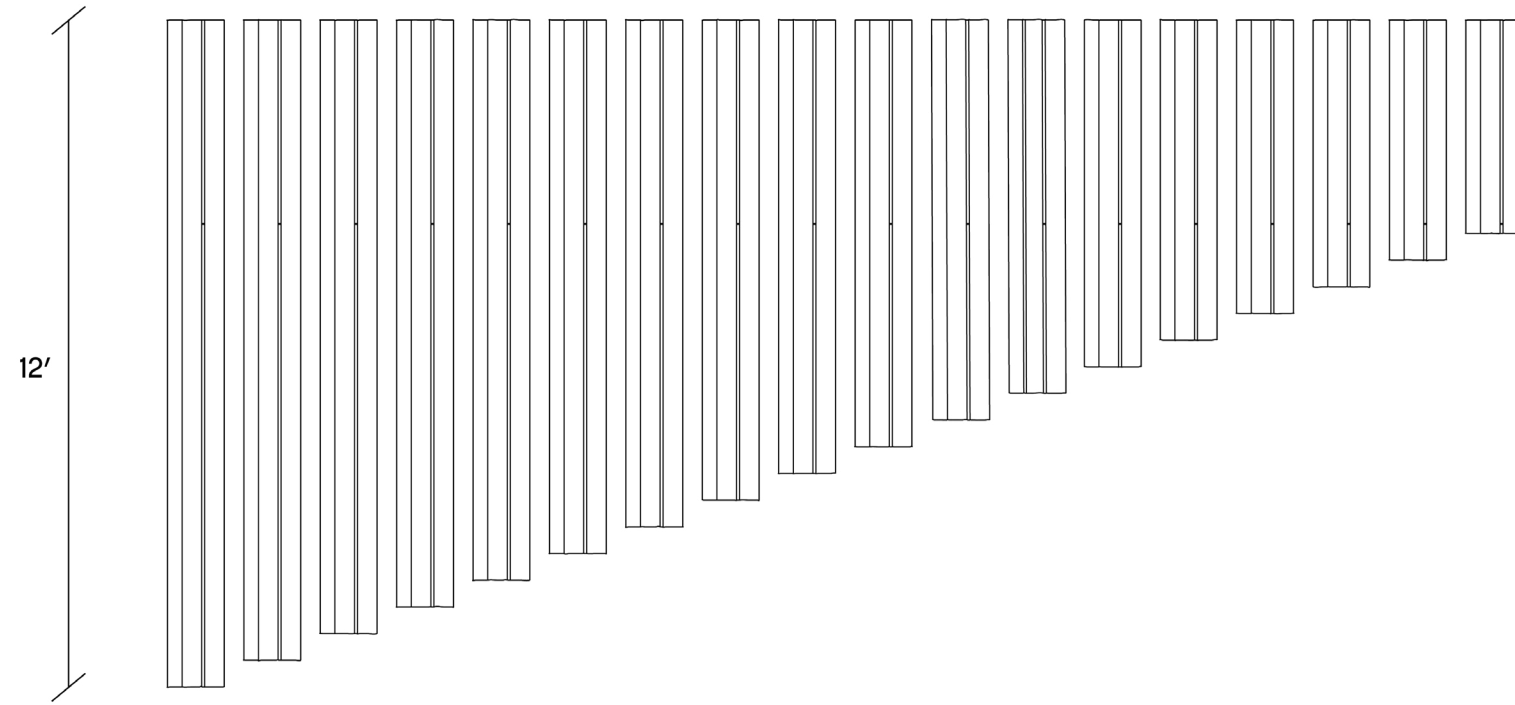
1 Exploded Axon

EX 5.09

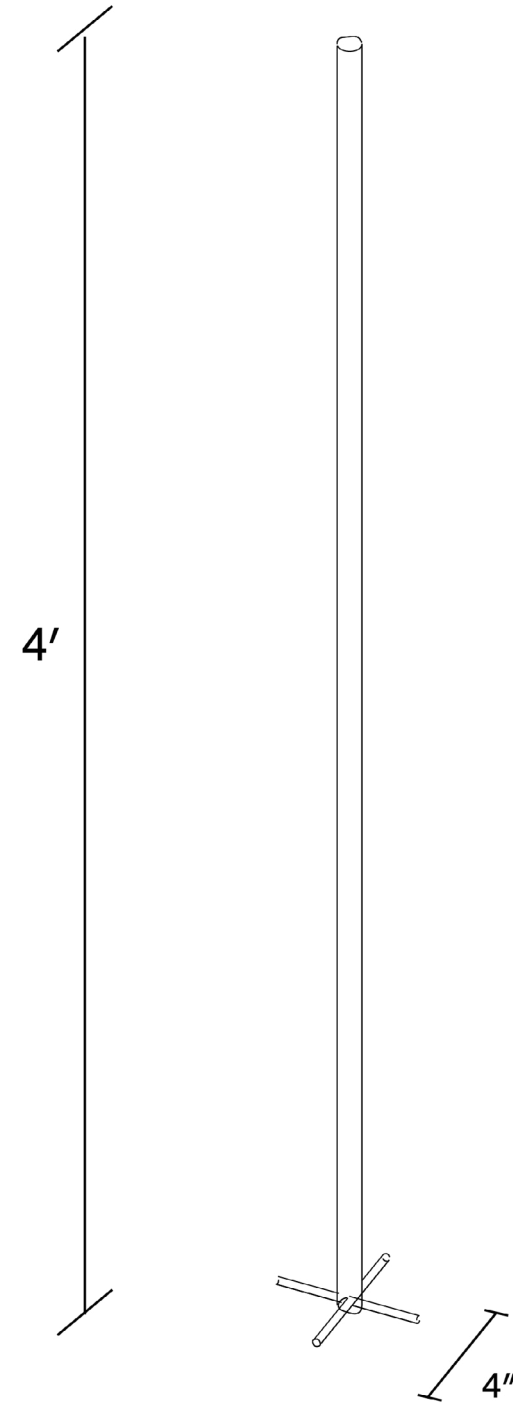
1 Axon

EX 5.10

Kaufman Spec 5



1 Pipe Details
EX 5.11



Sarah Felter
Exhibition & Experience Design

Fashion Institute of Technology
School of Graduate Studies
272 West 27th St
New York, NY 10011

Project



St. Mary's Park
South Bronx, NY

Drawings for design
intent ONLY

Client



Key Plan



Drawn By Sarah Felter

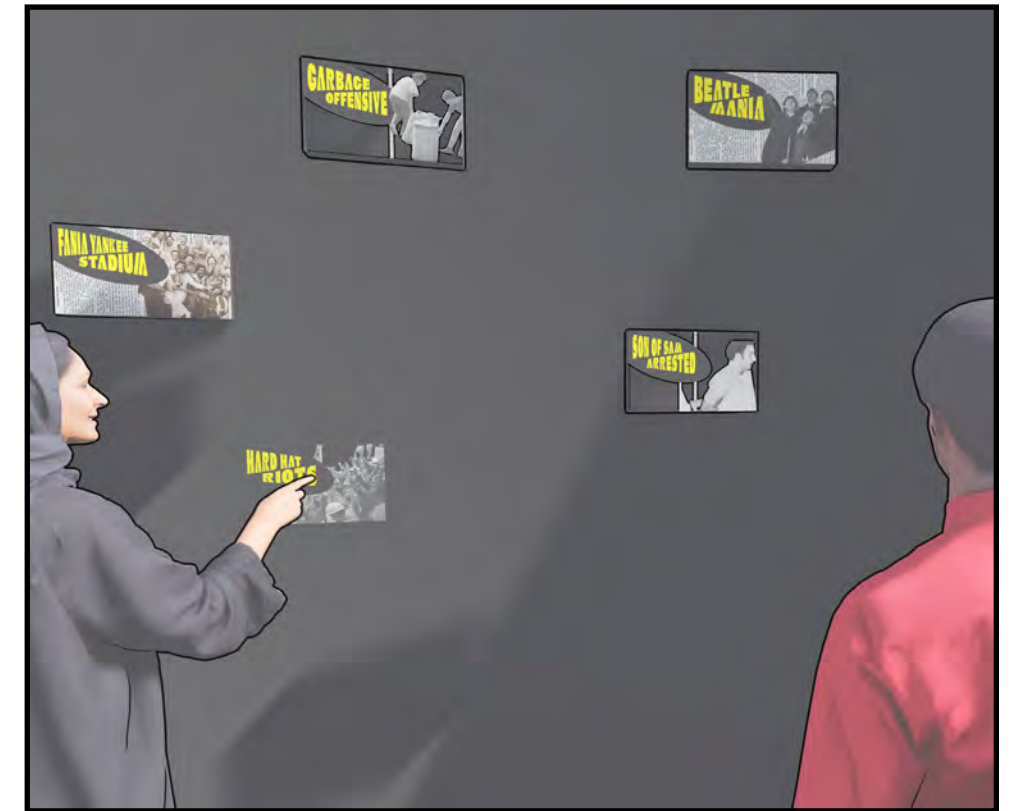
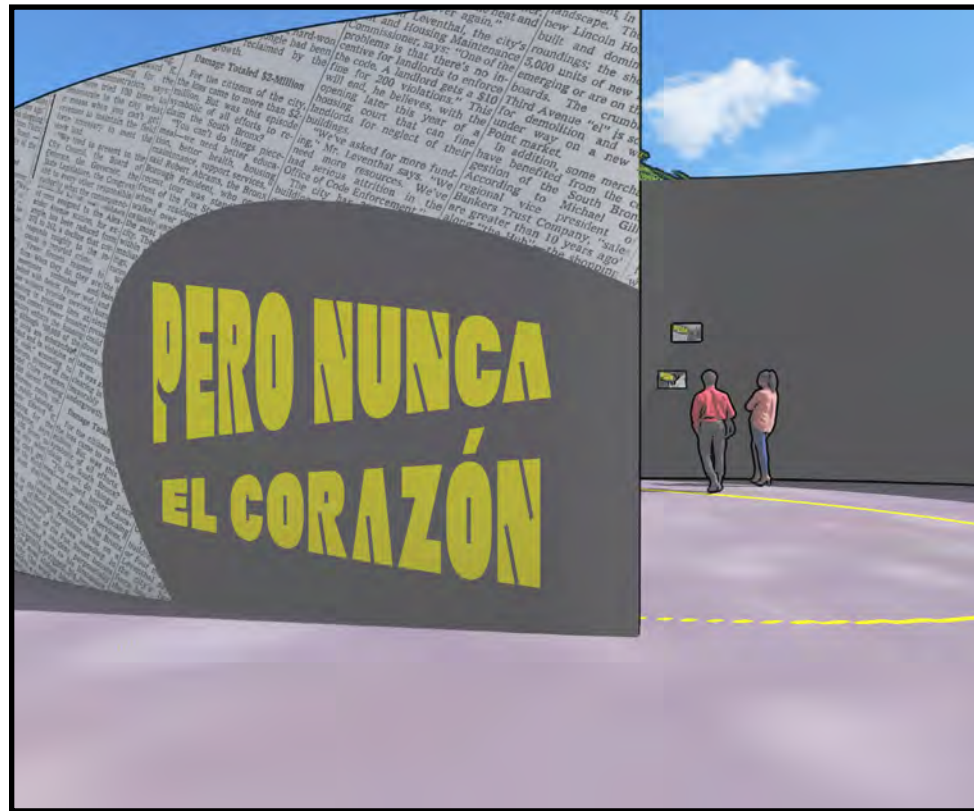
Scale

Date 12-09-2022

Location Centerpiece,
section 04A

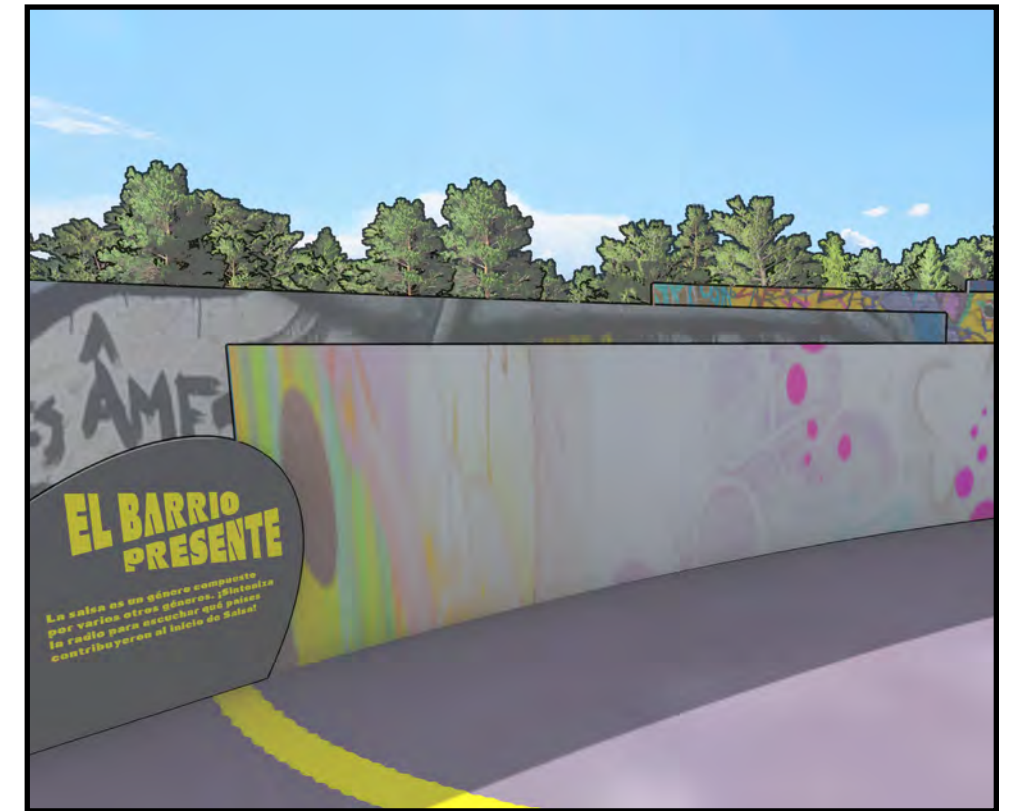
Drawing No. EX 5.11

Interactive Functional Description 1



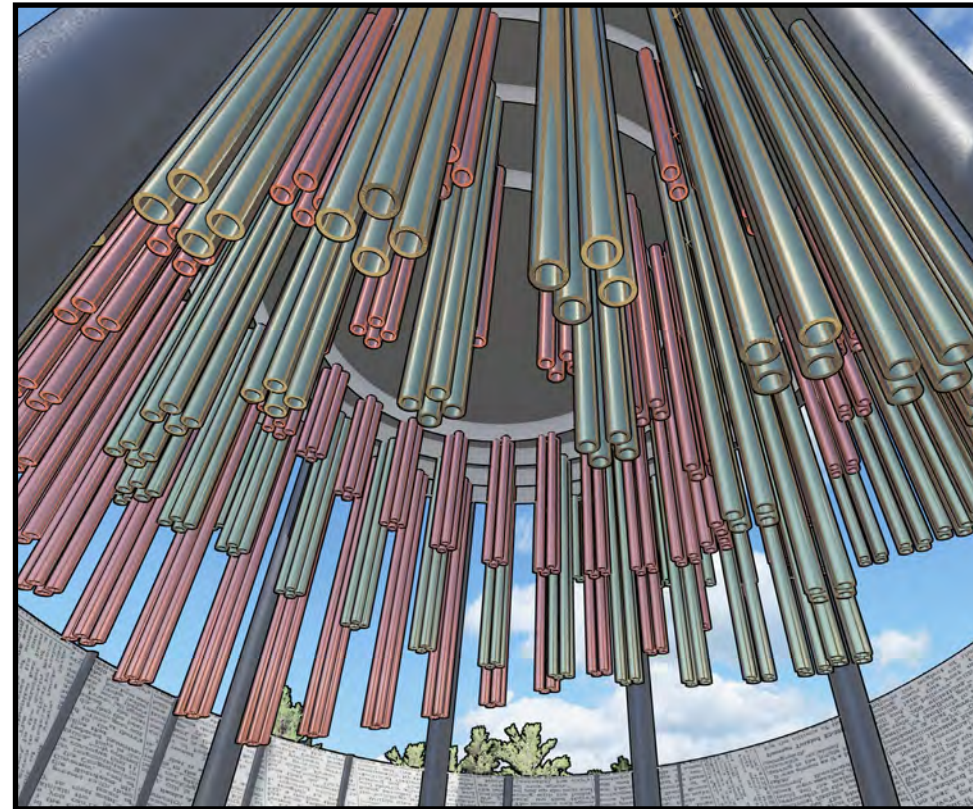
Timeline Storyboard

Interactive Functional Description 2



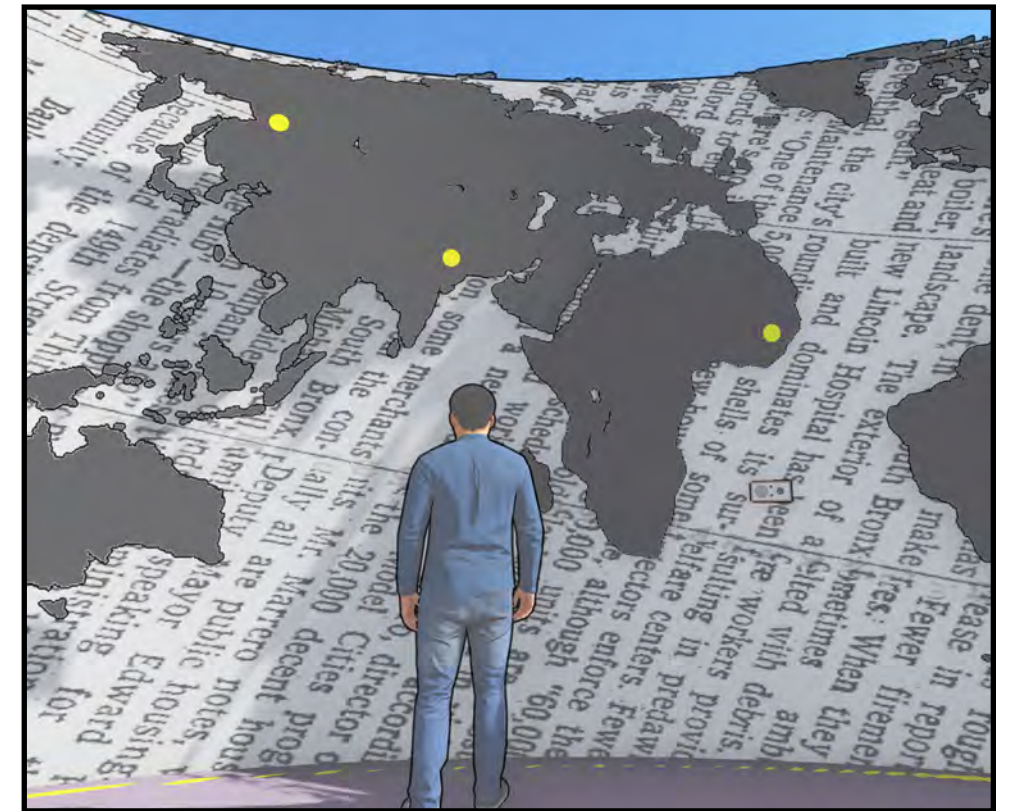
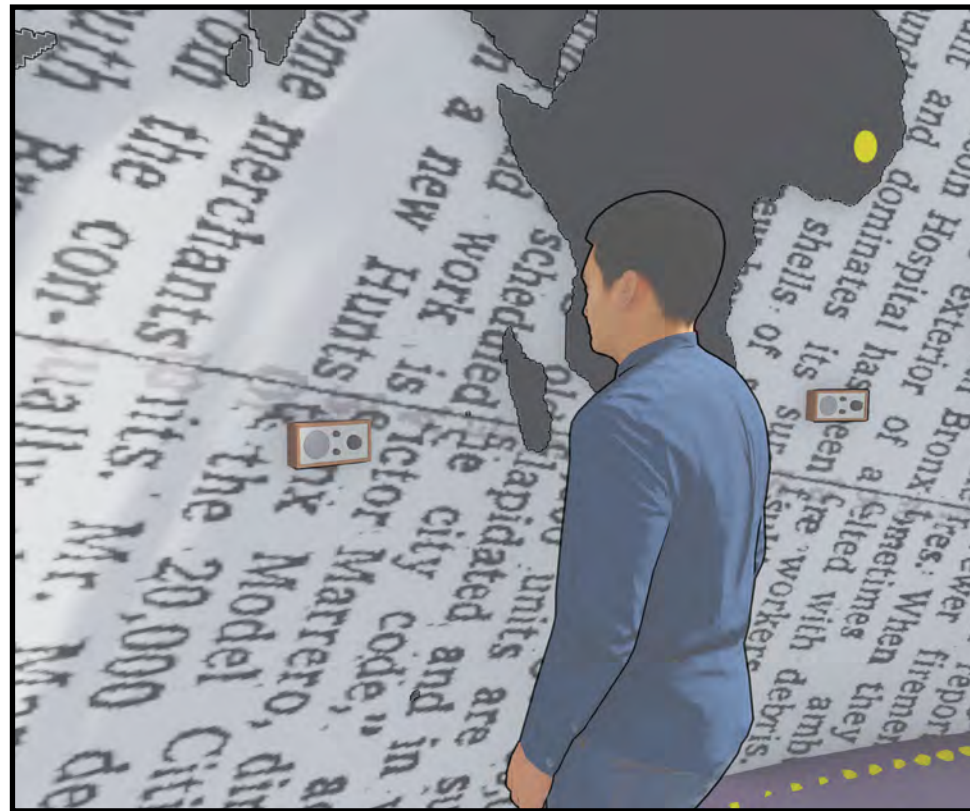
Graffiti Wall

Interactive Functional Description 3



Kaufman Storyboard

Interactive Functional Description 4



Map/Radio Storyboard